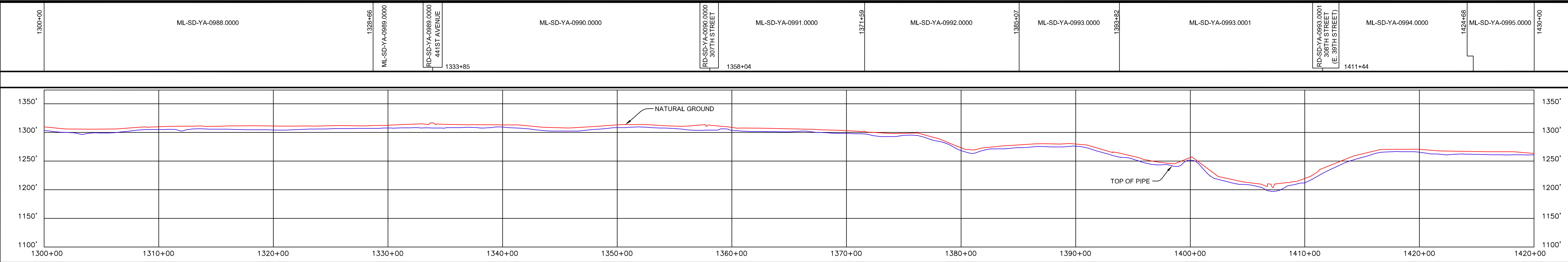
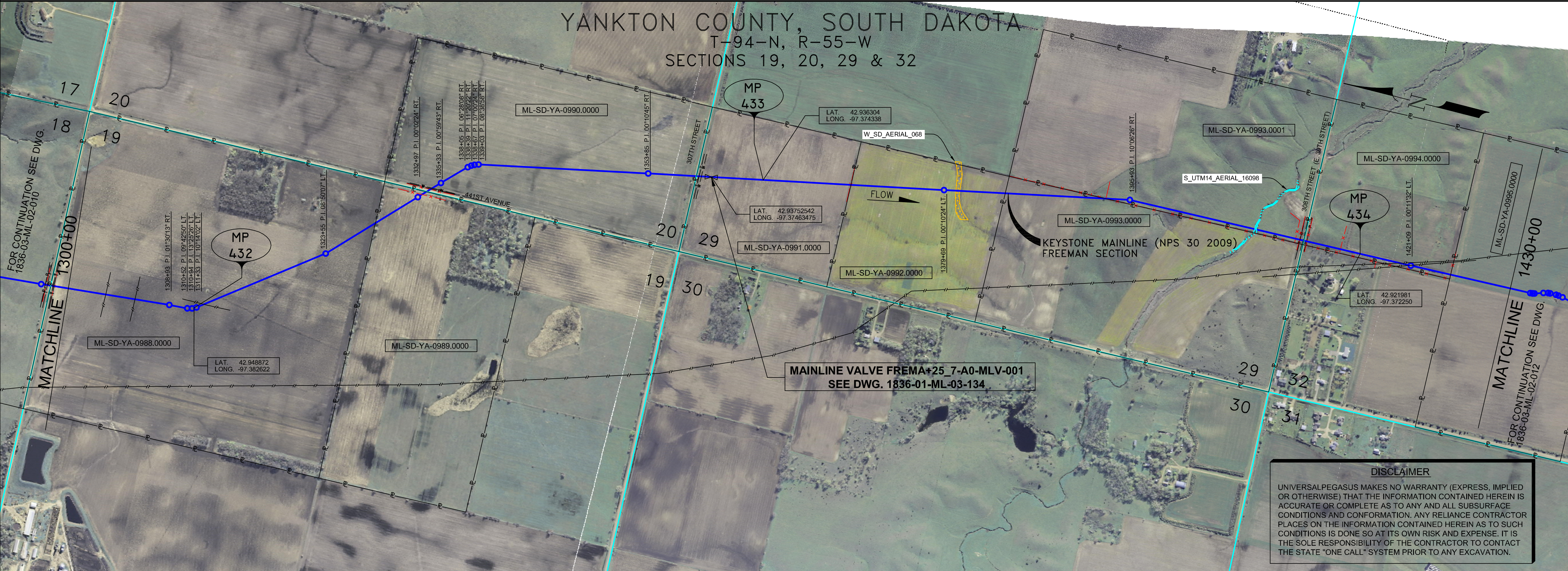


<b>RIGHT-OF-WAY HORIZONTAL REPRESENTATION (2D)</b>	TRACT NUMBER OWNERS/AGENCY	LENGTH APPLICABLE DWG. NO.
<b>LAND USE</b>		
<b>PIPELINE PROFILE</b>	<b>HORIZONTAL REPRESENTATION (2D)</b>	
<b>LEGEND</b>		



- GENERAL NOTES**
- 1) ALL CHAINAGES ARE IN FEET UNLESS OTHERWISE SPECIFIED.
  - 2) DATUM ELEVATION AND PROJECTION ARE BASED ON MEAN SEA LEVEL AND NAD 83.
  - 3) FIELD PIPE LOCATING REQUIRED TO DETERMINE PLACEMENT OF PIPELINE WITHIN PERMANENT EASEMENT.
  - 4) UNLESS OTHERWISE NOTED, 48 INCHES MINIMUM COVER EXCEPT 36 INCHES IN AREAS OF CONSOLIDATED ROCK.
  - 5) NO ACTUAL AS-BUILT GROUND SHOTS WERE TAKEN AT THIS LOCATION. THE PROFILE REPRESENTS A PROJECTION FROM SHOTS TAKEN AT 150' TO 250' INTERVALS.
  - 6) TWO TYPES OF COATING WERE APPLIED TO THE FIELD WELDS DURING THE ORIGINAL CONSTRUCTION: ONE TYPE WAS TWO COMPONENT LIQUID EPOXY. THE PRODUCTS USED WERE DENSO 7200 OR SPC SP-2888. THE OTHER TYPE THAT WAS APPLIED TO THE FIELD WELDS WAS FBE. THE PRODUCT NAME WAS 3M 6223 11G.
  - 7) THE SUBSTANTIAL CONSTRUCTION COMPLETION DATE, BASED ON CALIPER PIG RUN, WAS AUGUST 17, 2009 FOR M.P. 403.90 TO 422.96 AND OCTOBER 28, 2009 FOR M.P. 422.96 TO 463.18.
  - 8) ORIGINAL IN-SERVICE DATE OF THE KEYSTONE PIPELINE (PHASE 1): JUNE 30, 2010.
  - 9) CPS CALCULATION DATE: MAY 2010.
  - 10) ORION STATION SERIES NUMBER: 1182700.
  - 11) TO DETERMINE THE MILE POST AT A GIVEN LOCATION, ADD THE 3D STATION NUMBER FROM THIS SEGMENT TO STATION NUMBER 21496-76 AND DIVIDE BY 5283.

<b>PIPELINE PLAN (SCALE 1" = 500')</b>	<b>HORIZONTAL REPRESENTATION (2D)</b>
<b>LEGEND</b>	
<b>PIPELINE SCHEMATIC</b>	
<b>STATIONS (3D)</b>	
<b>ENVIRONMENTAL MITIGATION/RECLAMATION STATIONS (2D)</b>	



**OPERATING AND TEST PRESSURE**

1. THE MAXIMUM OPERATING PRESSURE (MOP) IS 1440 PSIG.
2. THE MINIMUM TEST PRESSURE WAS 1601 PSIG.

**BILL OF MATERIALS (3D)**

ITEM NO.	DESCRIPTION	QUANTITY
2	30" O.D. X 0.388" W.T. API-SLX-70 WFBE COATING	5,755'
3	30" O.D. X 0.516" W.T. API-SLX-70 WFBE COATING & ABRASION RESISTANT OVERCOAT	235'
6	30" O.D. X 0.425" W.T. API-SLX-70 WFBE COATING	6,995'
428	MAINLINE VALVE ASSEMBLY FREMA+25_7-A0-MLV-001 (26')	1 EA

**REFERENCE DRAWINGS**

REF. NO.	DRAWING NO.	REV. NO.	DRAWING TITLE
428	1836-01-ML-03-134	3	MAINLINE VALVE FREMA + 25_7-A0-MLV-001
	1836-01-ML-03-135	0	MAINLINE VALVE FREMA + 25_7-A0-MLV-001

**REVISIONS**

NO.	DATE	REV. BY	CHKD. BY	APP'D. BY	DESCRIPTION
1	5/17/08	UEI	RDG	LAG	ISSUED FOR CONSTRUCTION
2	10/17/18	UEI			ISSUED FOR AS-BUILT 1836-03-ML-02-011 REPLACES COVERAGE OF IFC DRAWINGS 1836-03-ML-02-017 1836-03-ML-02-018

**ENGINEERING RECORDS**

DRAWN BY	INITIAL	DATE	ENY. APPRD.	INITIAL	DATE
UEI		10/03/01	ENY.		

**PROFESSIONAL ENGINEER**

NAME	STATE	LIC#	REV#	DATE
LOYS ALVIN GRAY, III	SD	CE9004		

**SCALE:** 0 125 250 500 Feet

**TransCanada**  
In business to deliver

KEYSTONE MAINLINE (NPS 30 2009) FREEMAN SECTION  
SPREAD 4B DISCIPLINE 03

**AS-BUILT ALIGNMENT**

M.P. 431.79 TO M.P. 434.25  
SHEET 11 OF 13 SHEETS

STA. 1301+70 TO STA. 1431+85 (3D)

DRAWING NO. 1836-03-ML-02-011

STATION	DESCRIPTION	STATION	DESCRIPTION
1301+70	MATCHLINE 1300+00	1379+85	MATCHLINE 1430+00
1305+01	8" FOREIGN PIPELINE 10' CLR (ABOVE)	1381+42	1379+85 P.I. 00'10'24" RT.
1307+48	8" FOREIGN PIPELINE 7'0" CLR (ABOVE)	1381+43	1379+85 P.I. 00'10'24" RT.
1310+48	8" FOREIGN PIPELINE 4'0" CLR (ABOVE)	1381+44	1379+85 P.I. 00'10'24" RT.
1312+43	8" FOREIGN PIPELINE 3'0" CLR (ABOVE)	1381+45	1379+85 P.I. 00'10'24" RT.
1314+33	MP 432	1381+46	1379+85 P.I. 00'10'24" RT.
1316+23	MP 433	1381+47	1379+85 P.I. 00'10'24" RT.
1318+13	MP 434	1381+48	1379+85 P.I. 00'10'24" RT.
1320+03	MP 435	1381+49	1379+85 P.I. 00'10'24" RT.
1322+03	MP 436	1381+50	1379+85 P.I. 00'10'24" RT.
1324+03	MP 437	1381+51	1379+85 P.I. 00'10'24" RT.
1326+03	MP 438	1381+52	1379+85 P.I. 00'10'24" RT.
1328+03	MP 439	1381+53	1379+85 P.I. 00'10'24" RT.
1330+03	MP 440	1381+54	1379+85 P.I. 00'10'24" RT.
1332+03	MP 441	1381+55	1379+85 P.I. 00'10'24" RT.
1334+03	MP 442	1381+56	1379+85 P.I. 00'10'24" RT.
1336+03	MP 443	1381+57	1379+85 P.I. 00'10'24" RT.
1338+03	MP 444	1381+58	1379+85 P.I. 00'10'24" RT.
1340+03	MP 445	1381+59	1379+85 P.I. 00'10'24" RT.
1342+03	MP 446	1381+60	1379+85 P.I. 00'10'24" RT.
1344+03	MP 447	1381+61	1379+85 P.I. 00'10'24" RT.
1346+03	MP 448	1381+62	1379+85 P.I. 00'10'24" RT.
1348+03	MP 449	1381+63	1379+85 P.I. 00'10'24" RT.
1350+03	MP 450	1381+64	1379+85 P.I. 00'10'24" RT.
1352+03	MP 451	1381+65	1379+85 P.I. 00'10'24" RT.
1354+03	MP 452	1381+66	1379+85 P.I. 00'10'24" RT.
1356+03	MP 453	1381+67	1379+85 P.I. 00'10'24" RT.
1358+03	MP 454	1381+68	1379+85 P.I. 00'10'24" RT.
1360+03	MP 455	1381+69	1379+85 P.I. 00'10'24" RT.
1362+03	MP 456	1381+70	1379+85 P.I. 00'10'24" RT.
1364+03	MP 457	1381+71	1379+85 P.I. 00'10'24" RT.
1366+03	MP 458	1381+72	1379+85 P.I. 00'10'24" RT.
1368+03	MP 459	1381+73	1379+85 P.I. 00'10'24" RT.
1370+03	MP 460	1381+74	1379+85 P.I. 00'10'24" RT.
1372+03	MP 461	1381+75	1379+85 P.I. 00'10'24" RT.
1374+03	MP 462	1381+76	1379+85 P.I. 00'10'24" RT.
1376+03	MP 463	1381+77	1379+85 P.I. 00'10'24" RT.
1378+03	MP 464	1381+78	1379+85 P.I. 00'10'24" RT.
1380+03	MP 465	1381+79	1379+85 P.I. 00'10'24" RT.
1382+03	MP 466	1381+80	1379+85 P.I. 00'10'24" RT.
1384+03	MP 467	1381+81	1379+85 P.I. 00'10'24" RT.
1386+03	MP 468	1381+82	1379+85 P.I. 00'10'24" RT.
1388+03	MP 469	1381+83	1379+85 P.I. 00'10'24" RT.
1390+03	MP 470	1381+84	1379+85 P.I. 00'10'24" RT.
1392+03	MP 471	1381+85	1379+85 P.I. 00'10'24" RT.
1394+03	MP 472	1381+86	1379+85 P.I. 00'10'24" RT.
1396+03	MP 473	1381+87	1379+85 P.I. 00'10'24" RT.
1398+03	MP 474	1381+88	1379+85 P.I. 00'10'24" RT.
1400+03	MP 475	1381+89	1379+85 P.I. 00'10'24" RT.
1402+03	MP 476	1381+90	1379+85 P.I. 00'10'24" RT.
1404+03	MP 477	1381+91	1379+85 P.I. 00'10'24" RT.
1406+03	MP 478	1381+92	1379+85 P.I. 00'10'24" RT.
1408+03	MP 479	1381+93	1379+85 P.I. 00'10'24" RT.
1410+03	MP 480	1381+94	1379+85 P.I. 00'10'24" RT.
1412+03	MP 481	1381+95	1379+85 P.I. 00'10'24" RT.
1414+03	MP 482	1381+96	1379+85 P.I. 00'10'24" RT.
1416+03	MP 483	1381+97	1379+85 P.I. 00'10'24" RT.
1418+03	MP 484	1381+98	1379+85 P.I. 00'10'24" RT.
1420+03	MP 485	1381+99	1379+85 P.I. 00'10'24" RT.
1422+03	MP 486	1382+00	1379+85 P.I. 00'10'24" RT.
1424+03	MP 487	1382+01	1379+85 P.I. 00'10'24" RT.
1426+03	MP 488	1382+02	1379+85 P.I. 00'10'24" RT.
1428+03	MP 489	1382+03	1379+85 P.I. 00'10'24" RT.
1430+03	MP 490	1382+04	1379+85 P.I. 00'10'24" RT.
1432+03	MP 491	1382+05	1379+85 P.I. 00'10'24" RT.
1434+03	MP 492	1382+06	1379+85 P.I. 00'10'24" RT.
1436+03	MP 493	1382+07	1379+85 P.I. 00'10'24" RT.
1438+03	MP 494	1382+08	1379+85 P.I. 00'10'24" RT.
1440+03	MP 495	1382+09	1379+85 P.I. 00'10'24" RT.
1442+03	MP 496	1382+10	1379+85 P.I. 00'10'24" RT.
1444+03	MP 497	1382+11	1379+85 P.I. 00'10'24" RT.
1446+03	MP 498	1382+12	1379+85 P.I. 00'10'24" RT.
1448+03	MP 499	1382+13	1379+85 P.I. 00'10'24" RT.
1450+03	MP 500	1382+14	1379+85 P.I. 00'10'24" RT.

TEST SECTIONS (3D)	STATION	DESCRIPTION
TEST SECTION 4B-2	1301+70	TEST STATION 'F4' IS LOCATED AT STA. NO. 1300+57 FOR THESE THREE FOREIGN PIPELINES
	1337+85	
	1369+00	
	1399+00	
	1431+85	

**ENVIRONMENTAL MITIGATION/RECLAMATION STATIONS (2D)**

STATION	DESCRIPTION
1301+70	TEST STATION 'F4' IS LOCATED AT STA. NO. 1300+57 FOR THESE THREE FOREIGN PIPELINES
1337+85	
1369+00	
1399+00	
1431+85	