

RAVEN OAKS ADDITION
RS-2

SUMMER HILL SOI ADDITION

FOX RUN ADDITION

EAST 57TH STREET

EL09-021 existing territory line

- SEC current members
- Xcel Service in SEC's service area
- Territory line prior to EL09-021
- SEC's 3 phase line

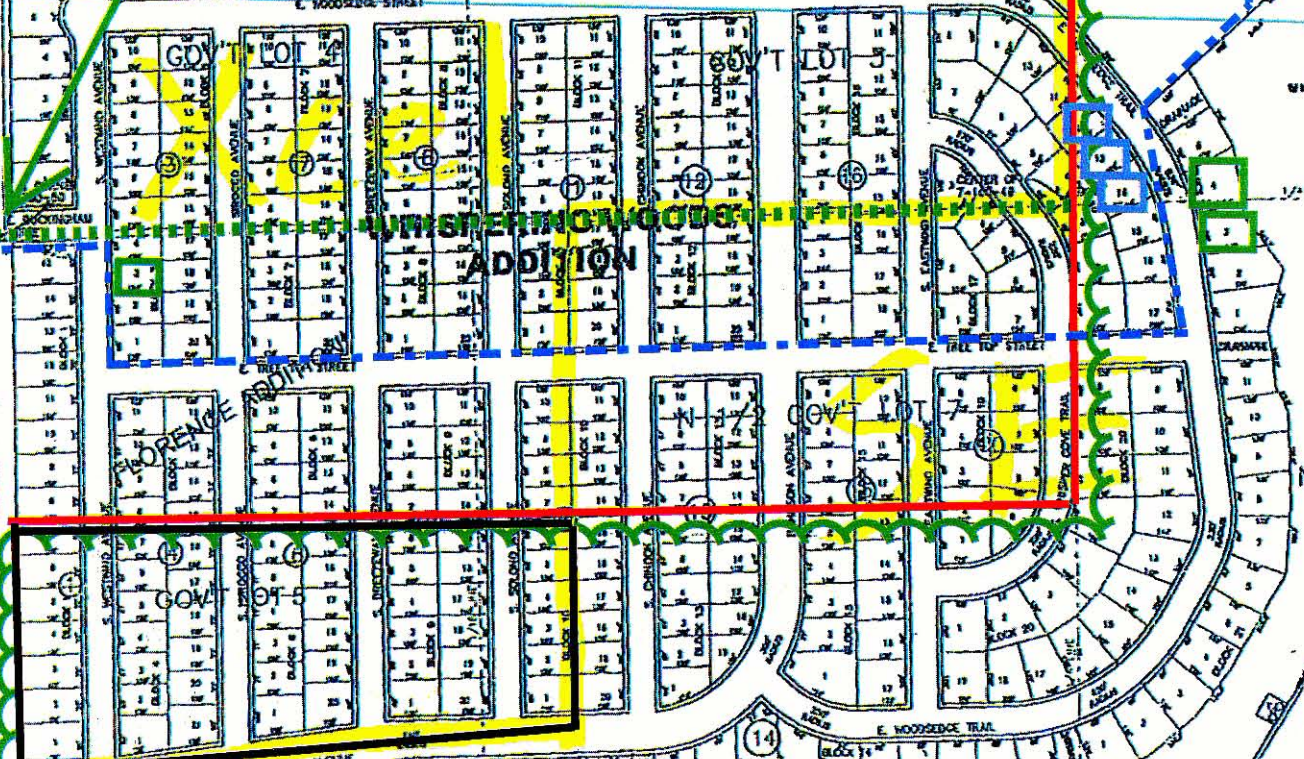
TRACT 2
SHIELDS FIRST ADDITION
TRACT 1
TRACT 3

SHIELDS SECOND ADDITION
TRACT 1

N1/4 CORNER 7-100-41

OFF-SD 704 571

WHISPERING RIDGE ADDITION
SOUTHEASTERN AVENUE / 476TH AVENUE



Southeastern Electric Cooperative's UNPLATTED Service area is 150 of 263 lots based on any scenario ignoring SDPUC EL09-021

100' WIDE DRAINAGE CHANNEL

UNPLATTED

S 1/2 GOV'T LOT 7



CONSULTING ENGINEERS/LAND SURVEYORS, INC.
3700 S. WEST AVENUE, SIOUX FALLS, SD 57105-6352
(605)367-1036 FAX (605)367-1002

Rev.	8
Rev.	8
Rev.	8
Rev.	8