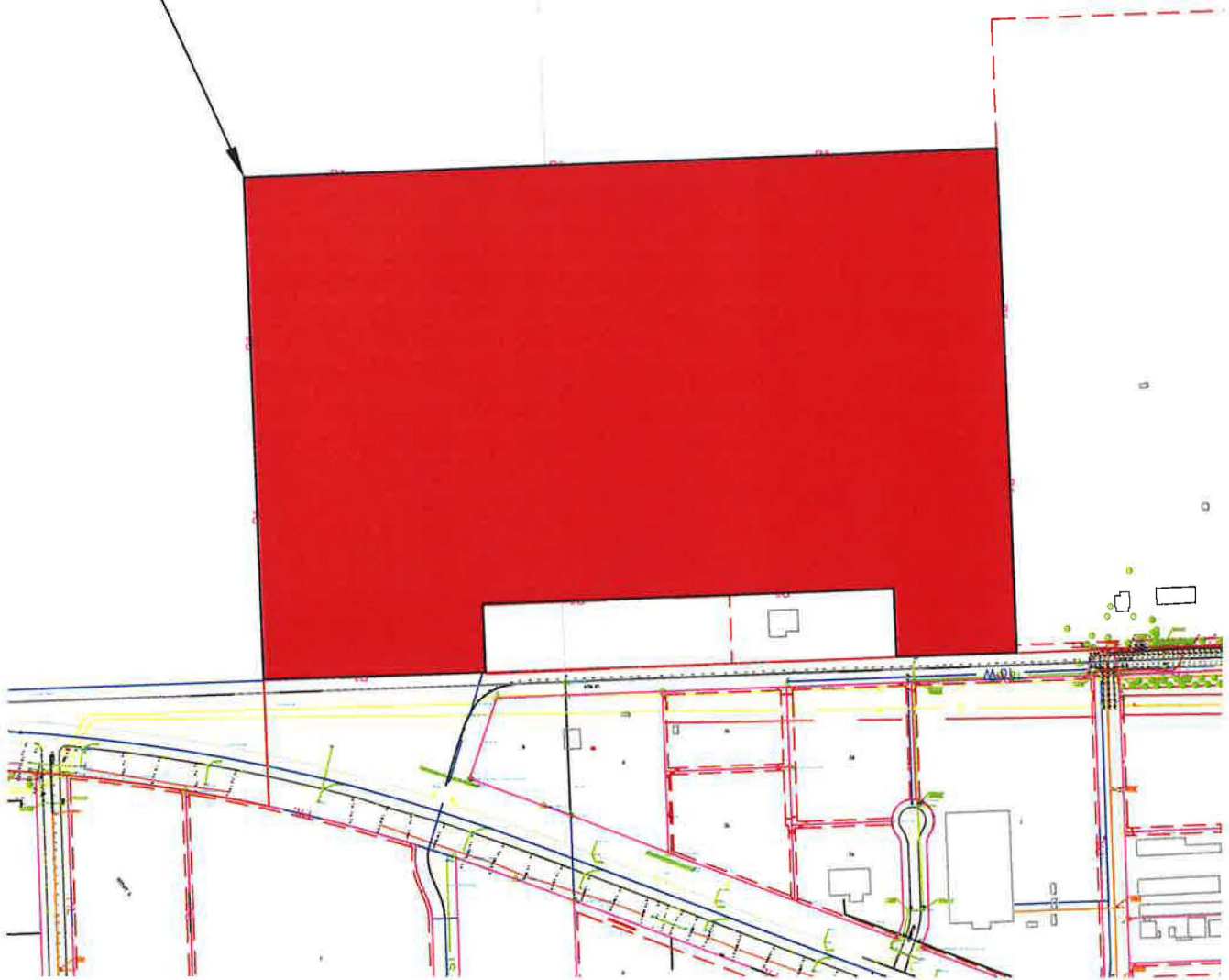


Electric service territory to be transferred
(Lots 1, 2 and 3 AMS Industrial Park
Clay County, South Dakota)



Territory Transfer

| | | | |
|------------------------|-------|--------|------|
| Territory Transfer | | | 1 |
| CITY OF VERMILLION, SD | 57069 | N.T.S. | 2021 |

