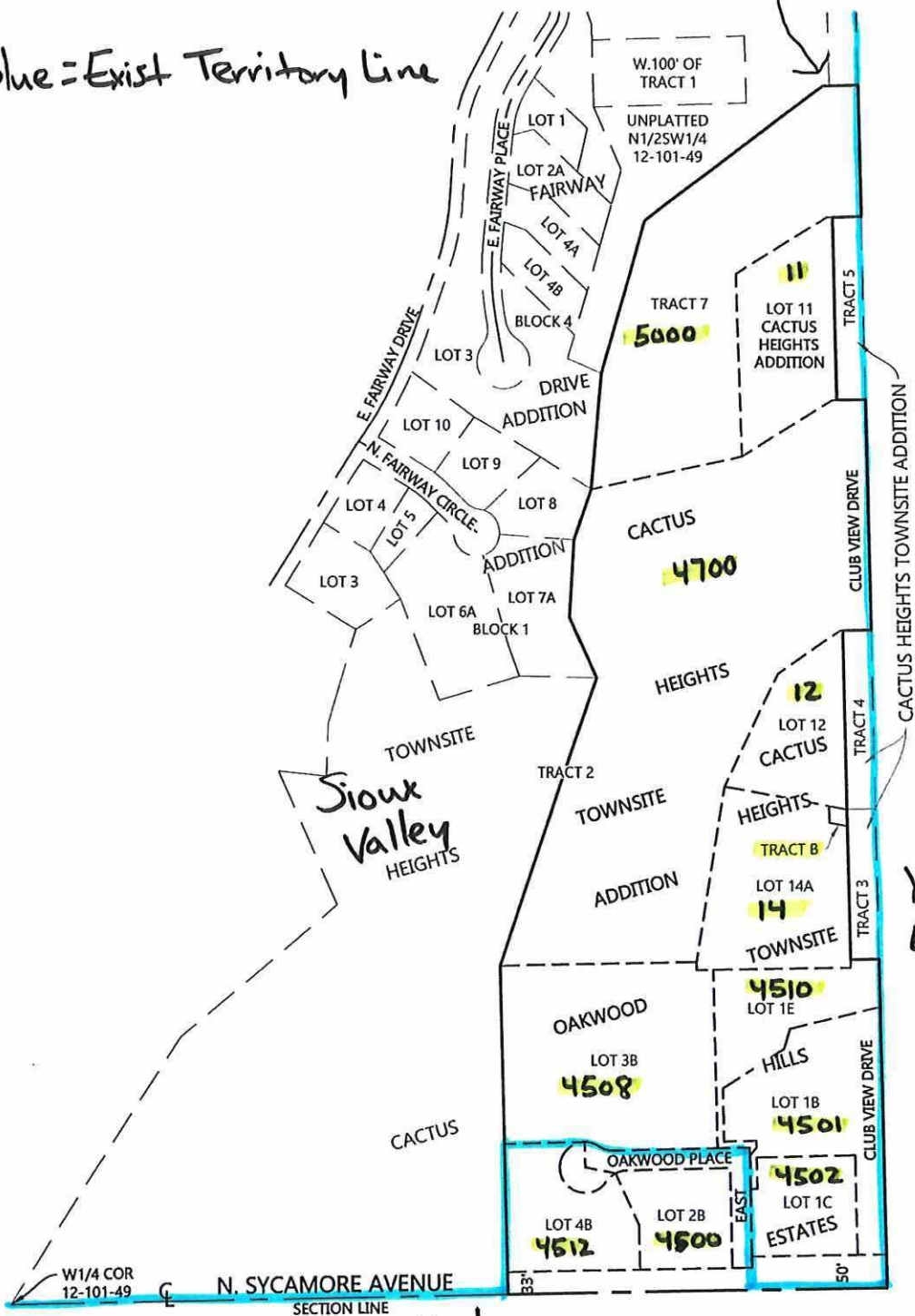


EXHIBIT 'A'

Note: In EL15-004 see Exhibit L, page 13, step 157 for starting point with legal description.

See Exhibit B

Blue = Exist Territory Line



Xcel Energy



I, EUGENE F. MAURICE, HEREBY CERTIFY THAT THIS SURVEY, PLAN OR REPORT WAS PREPARED BY ME OR UNDER MY DIRECT SUPERVISION AND THAT I AM A DULY REGISTERED LAND SURVEYOR UNDER THE LAWS OF THE STATE OF SOUTH DAKOTA.

DATE: 2/28/23

EUGENE F. MAURICE
 REG. NO. 4478

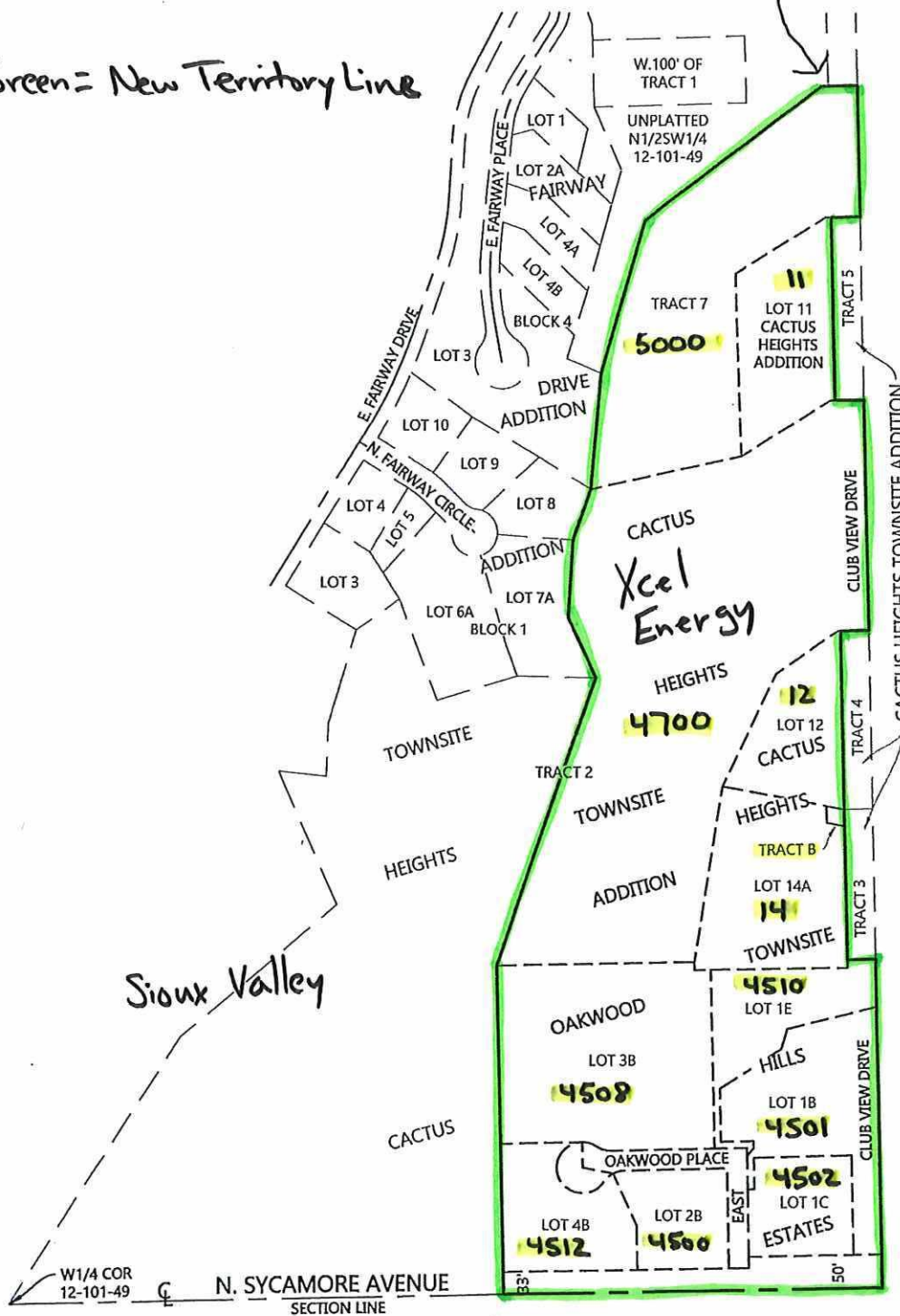
Sayre Associates
 216 S. DuRoi Avenue • Sioux Falls, SD 57104
 Phone: (605) 332-7211 • Fax: (605) 332-7222
 Engineers • Surveyors

EXHIBIT 'A'

Note: In EL15-004 see Exhibit L, page 13, step 157 for starting point with legal description.

See Exhibit B

Green = New Territory Line



Sioux Valley

Tract 3, 4, +5
Sioux Valley

Xcel Energy



Xcel Energy



I, EUGENE F. MAURICE, HEREBY CERTIFY THAT THIS SURVEY, PLAN OR REPORT WAS PREPARED BY ME OR UNDER MY DIRECT SUPERVISION AND THAT I AM A DULY REGISTERED LAND SURVEYOR UNDER THE LAWS OF THE STATE OF SOUTH DAKOTA.

DATE: 4/28/23

Eugene F. Maurice
 REG. NO. 4478
Sayre Associates

216 S. Duluth Avenue • Sioux Falls, SD 57104
 Phone: (605) 332-7211 • Fax: (605) 332-7222
 Engineers • Surveyors

Exhibit "A"

157. THENCE continue south along section line to a line extending west from the NW corner of Lot 4B of Oakwood Hills Estates in Section 12 of T101N, R49W
158. THENCE continue east along lot lines to the NE corner of Lot 3B of Oakwood Hills Estates in Section 12,
159. THENCE continue southeast to the southwest corner of Lot 7A of Cactus Heights Townsite in Section 12, also being a corner of Tract 2 of Cactus Heights Townsite Addition in Section 12,
160. THENCE easterly along lot lines to the NE corner of Tract 2, also being the NW corner of Tract 7, both of Cactus Heights Townsite Addition in Section 12,
161. THENCE easterly and southeasterly along the lot lines of Tract 7 to the SE corner of Tract 7 of Cactus Heights Townsite Addition in Section 12,
162. THENCE west along the lot line to the SE corner of Tract 5 of Cactus Heights Townsite Addition in Section 12.
163. THENCE north along the lot lines to the SE corner of Lot 11 of Cactus Heights Townsite in Section 12.
164. THENCE west along the lot lines to the SW corner of Lot 11 of Cactus Heights Townsite in Section 12 and also being a corner of Tract 2 of Cactus Heights Townsite Addition in Section 12.
165. THENCE south along the lot lines to the SE corner of Tract 2 of Cactus Heights Townsite Addition in Section 12.
166. THENCE west along the lot line to the SE corner of Tract 4 of Cactus Heights Townsite Addition in Section 12.
167. THENCE north along the lot lines to the NE corner of Tract 4 of Cactus Heights Townsite Addition in Section 12, and also being the SE corner of Lot 12 of Cactus Heights Townsite in Section 12.

Exhibit "A" continued

168. THENCE west along the south lot lines of Lots 12, 14A & Tract B of Cactus Heights Townsite in Section 12 to the NW corner of Tract 3 of Cactus Heights Townsite Addition in Section 12.
169. THENCE south along the lot lines to the SW corner of Tract 3 of Cactus Heights Townsite Addition in Section 12.
170. THENCE west along lot lines to the west section line of Section 12.
171. THENCE north along the west section line of Section 12 to a line extending west from the NW corner of Lot 4B of Oakwood Hills Estates in Section 12.