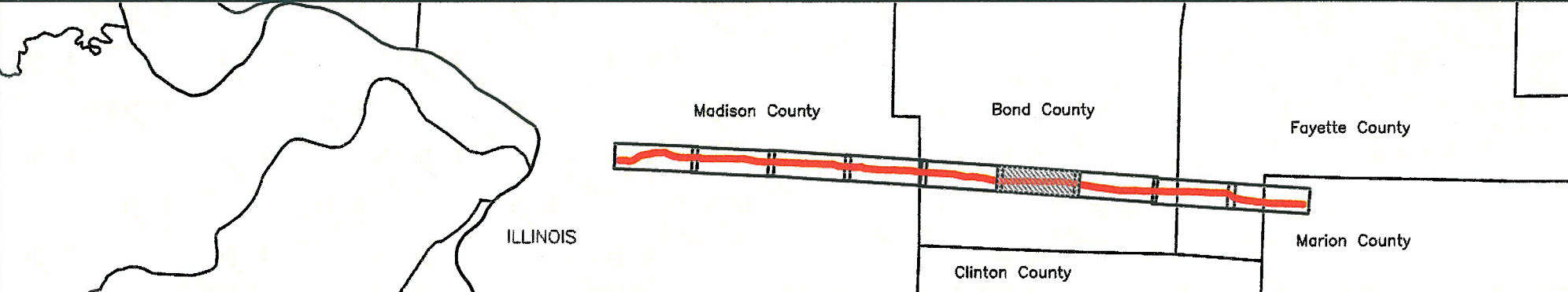
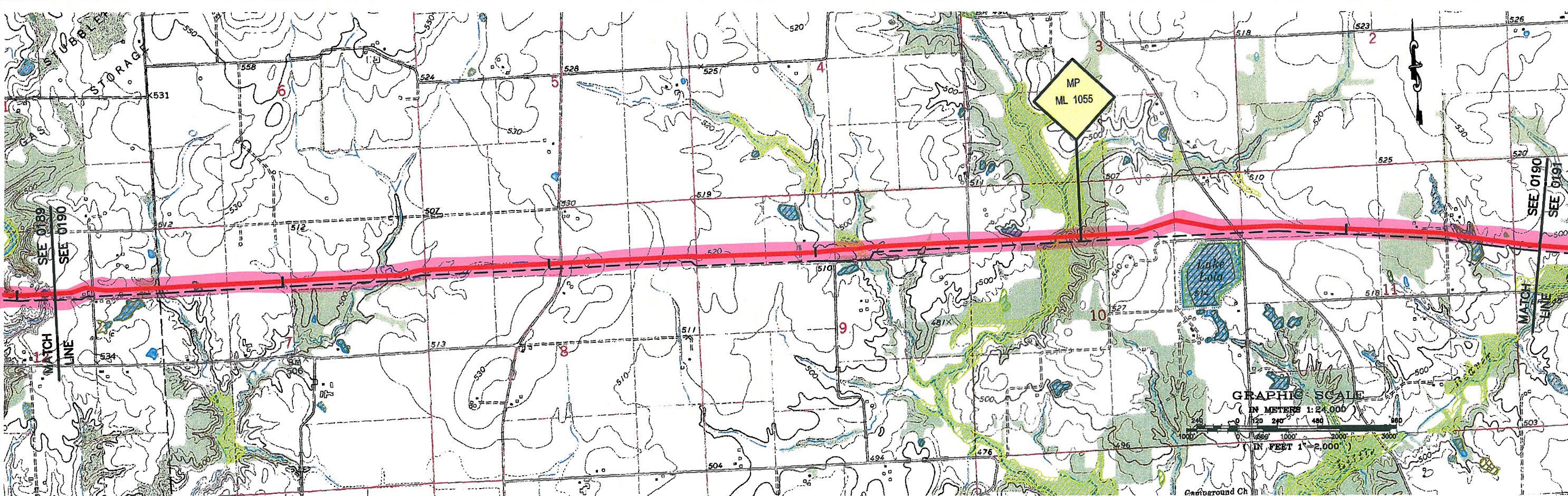
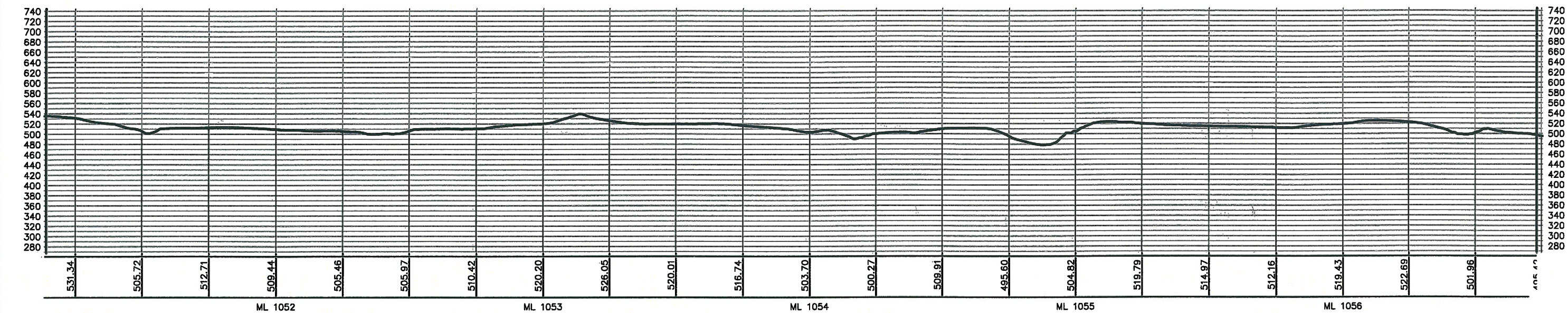


ELEVATIONS SHOWN IN FEET



PREPARED BY:  
**TROW ENGINEERING CONSULTANTS, INC.**  
 1300 Metropolitan Boulevard, Suite 200  
 Tallahassee, Florida 32308  
 Phone: 1-850-385-5441  
 Fax: 1-850-385-5523



**KEYSTONE PIPELINE PROJECT  
 PROPOSED ROUTE BOOK**

MAP PARAMETERS  
 PROJECTION: NAD83, UTM: 16N  
 SCALE: 1:24000, 1" = 2000'

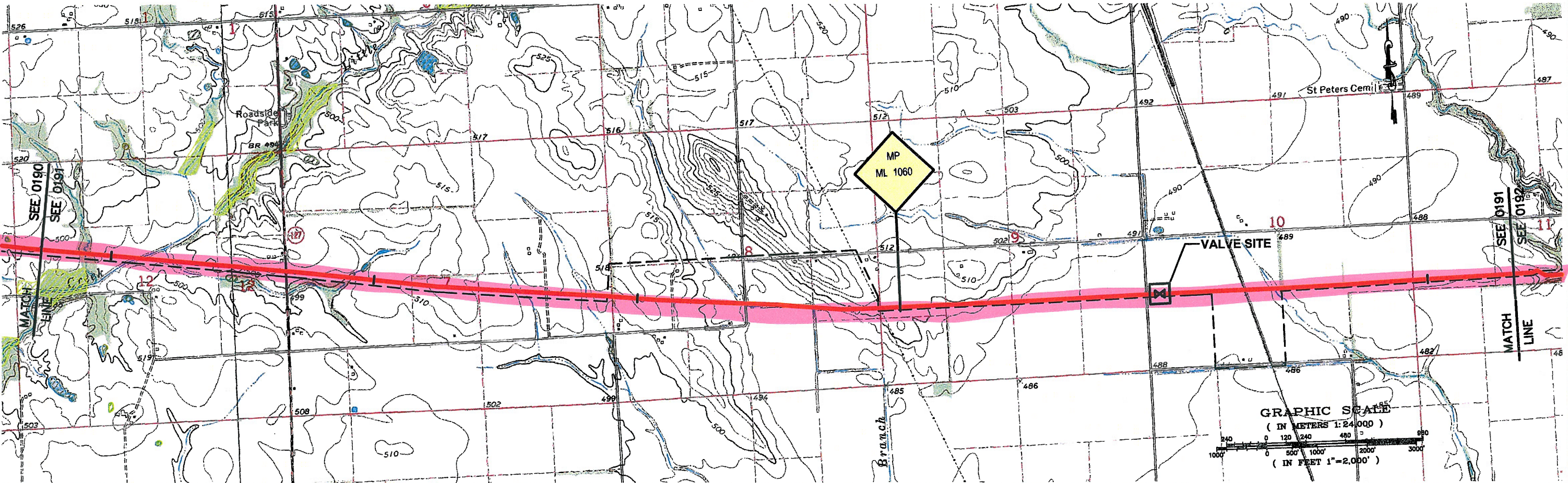
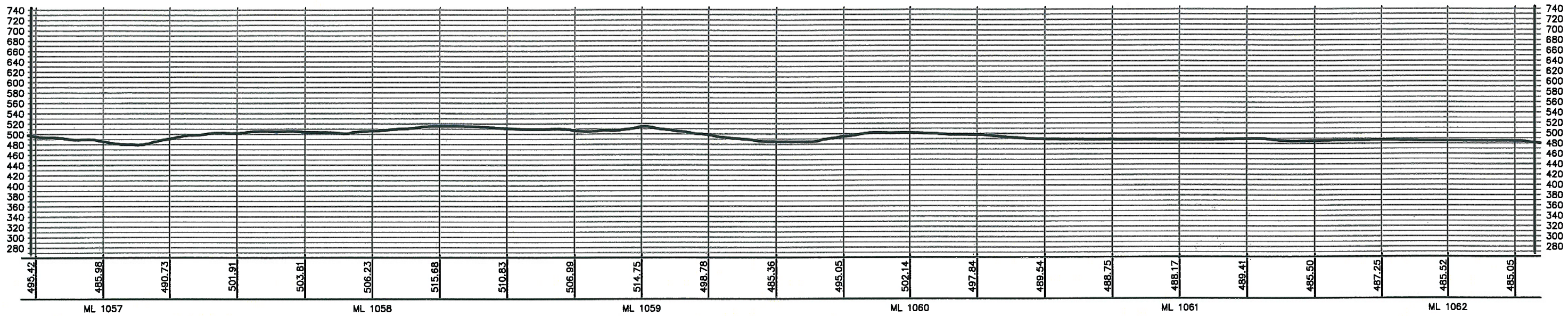
NO.	REVISION	DATE
0	ISSUED FOR DEPARTMENT OF STATE FILING	MAR 13, 06
<b>DRAWING NUMBER</b>	<b>DRAWN BY</b>	<b>CHECKED BY</b>
<b>K-17-P-900-A-0007</b>	<b>BEK</b>	<b>BLS</b>

PROJECT: <b>50388E</b>	SHEET: <b>0190</b>
APPROVED BY: <b>RG</b>	LAST PLOT DATE: <b>Mon, 20 Mar 2006 - 7:12pm</b>

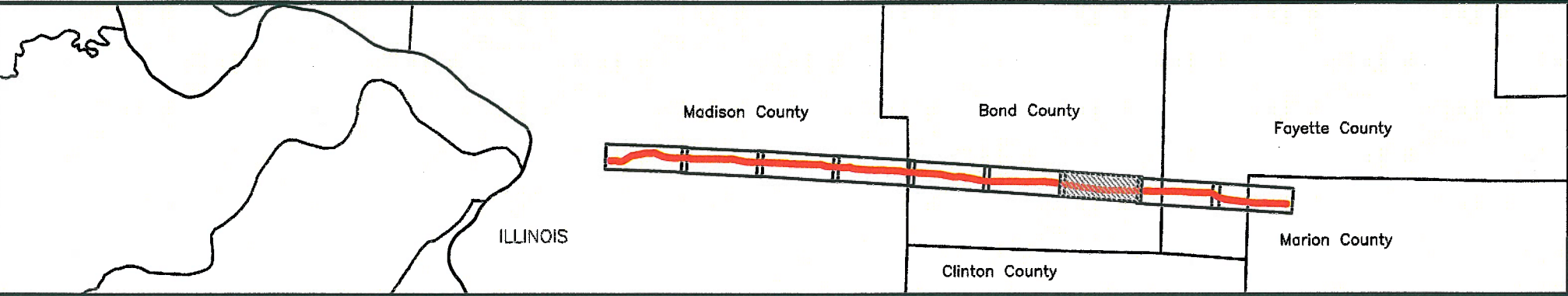
K:\Drawings\50388E\KEYSTONE\DRAWING FILES\DRAWINGS\444 MAP BOOK\MAR 2006 ISSUE\02-PROFILES\16N-17-P-900-A-185-rw2.dwg 3/8/2006 8:34:20 AM EST



ELEVATIONS SHOWN IN FEET



X:\Drawings\50388A\_KESTONE\DRAWING FILES\DRAWINGS\24K MAP BOOKS\MAR 2006 ISSUE\02-PROFILES\REVISED UTM 16N-K-17-P-900-A-18-rv2.dwg 3/9/2006 8:34:20 AM EST



PREPARED BY:  
**TROW ENGINEERING CONSULTANTS, INC.**  
 1300 Metropolitan Boulevard, Suite 200  
 Tallahassee, Florida 32308  
 Phone: 1-850-385-5441  
 Fax: 1-850-385-5523



**KEYSTONE PIPELINE PROJECT  
 PROPOSED ROUTE BOOK**

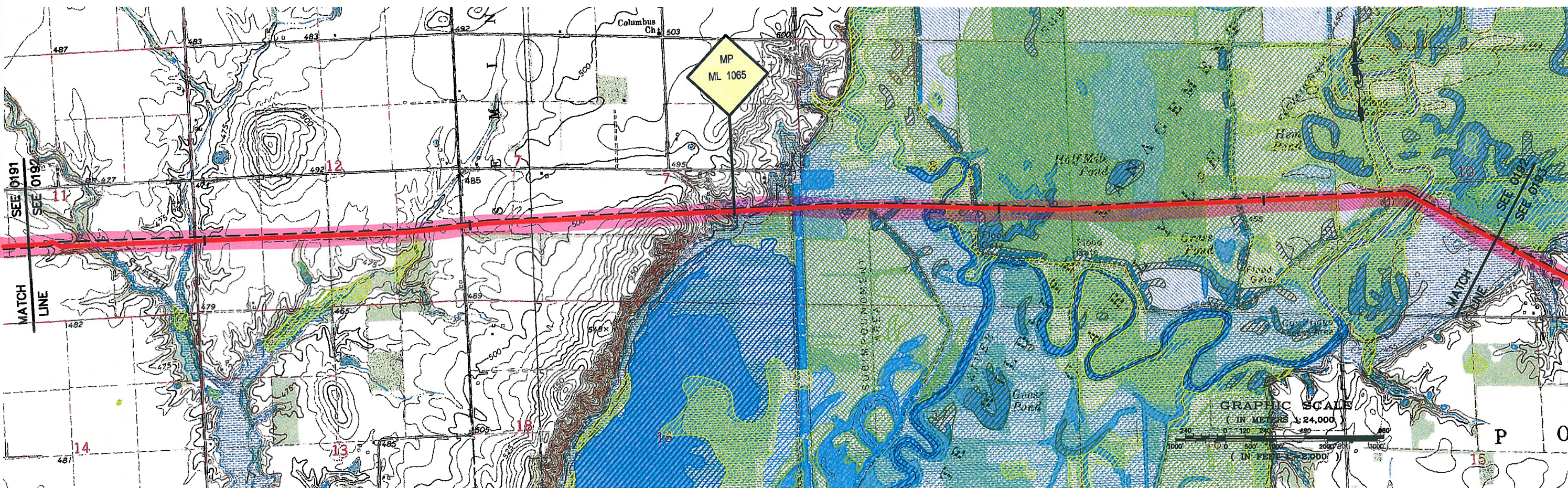
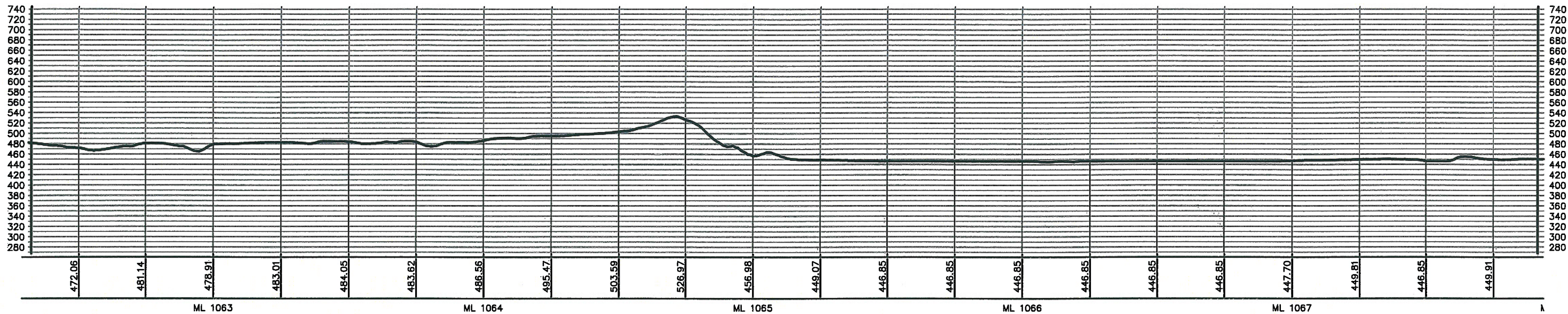
MAP PARAMETERS  
 PROJECTION: NAD83, UTM: 16N  
 SCALE: 1:24000, 1" = 2000'

NO.	REVISION	DATE
0	ISSUED FOR DEPARTMENT OF STATE FILING	MAR 13.06
DRAWING NUMBER	DRAWN BY	CHECKED BY
K-17-P-900-A-0008	BEK	BLS

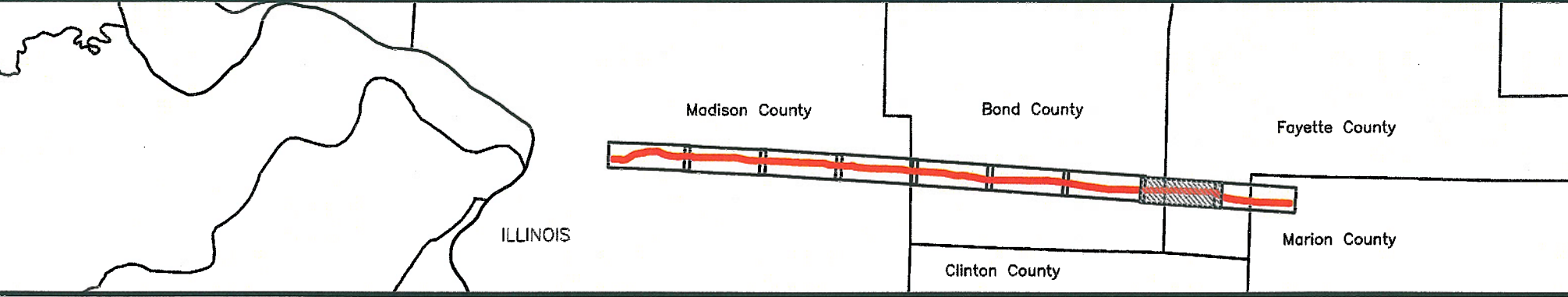
PROJECT:	50388E
SHEET:	<b>0191</b>
APPROVED BY:	RG
LAST PLOT DATE:	Tue, 21 Mar 2006 - 12:08pm



ELEVATIONS SHOWN IN FEET



X:\Drawing\50388A\KEYSTONE\DRAWING FILES\DRAWINGS\144 MAP BOOKS\MAR 2006 ISSUE\02-PROFILES\Profile.dwg 3/7/2006 8:34:25 AM EST



PREPARED BY:  
**TROW ENGINEERING CONSULTANTS, INC.**  
 1300 Metropolitan Boulevard, Suite 200  
 Tallahassee, Florida 32308  
 Phone: 1-850-385-5441  
 Fax: 1-850-385-5523



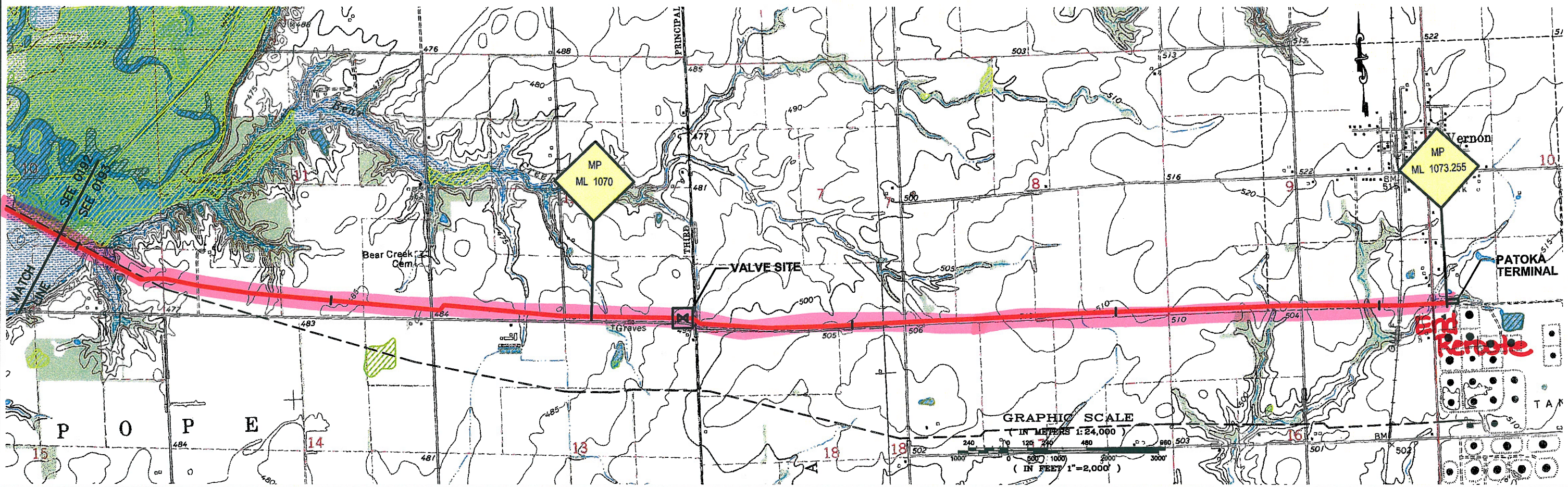
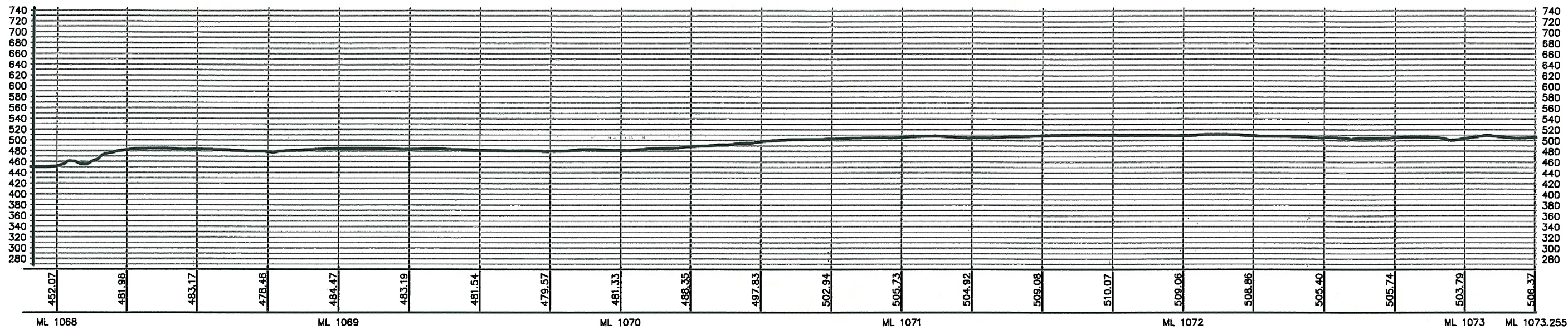
NO.	REVISION	DATE
0	ISSUED FOR DEPARTMENT OF STATE FILING	MAR 13.06
DRAWING NUMBER		DRAWN BY
K-17-P-900-A-0009		BEK
CHECKED BY		APPROVED BY
BLS		RG

**KEYSTONE PIPELINE PROJECT  
 PROPOSED ROUTE BOOK**

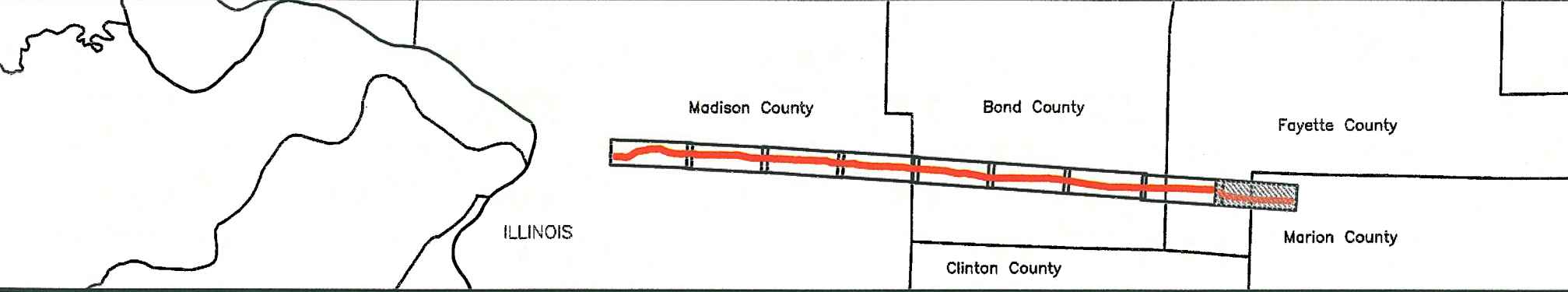
MAP PARAMETERS	
PROJECTION: NAD83, UTM: 16N	
SCALE: 1:24000, 1" = 2000'	
PROJECT: 50388E	SHEET: 0192
LAST PLOT DATE: Mon, 20 Mar 2006 - 6:59pm	



ELEVATIONS SHOWN IN FEET



X:\Projects\50388A\_KESTONE\DRAWING FILES\DRAWINGS\3AK MAP BOOKS\MAR 2008 ISSUE\02-PROFILES\REVISED UTM 16N-K-17-P-900-A-18-rev2.dwg 3/9/2008 8:32:20 AM EST



PREPARED BY:  
**TROW ENGINEERING CONSULTANTS, INC.**  
 1300 Metropolitan Boulevard, Suite 200  
 Tallahassee, Florida 32308  
 Phone: 1-850-385-5441  
 Fax: 1-850-385-5523



NO.	REVISION	DATE
0	ISSUED FOR DEPARTMENT OF STATE FILING	MAR 13.06
DRAWING NUMBER	DRAWN BY	CHECKED BY
K-17-P-900-A-0010	BEK	BLS

**KEYSTONE PIPELINE PROJECT  
 PROPOSED ROUTE BOOK**

MAP PARAMETERS  
 PROJECTION: NAD83, UTM: 16N  
 SCALE: 1:24000, 1" = 2000'

PROJECT: 50388E SHEET: **0193**

APPROVED BY: RG  
 LAST PLOT DATE: Tue, 21 Mar 2006 - 12:09pm