

# CONFIDENTIAL

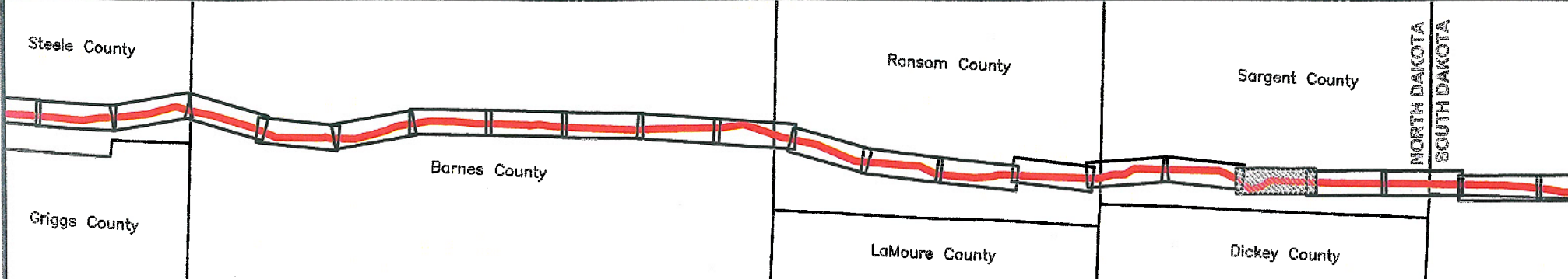
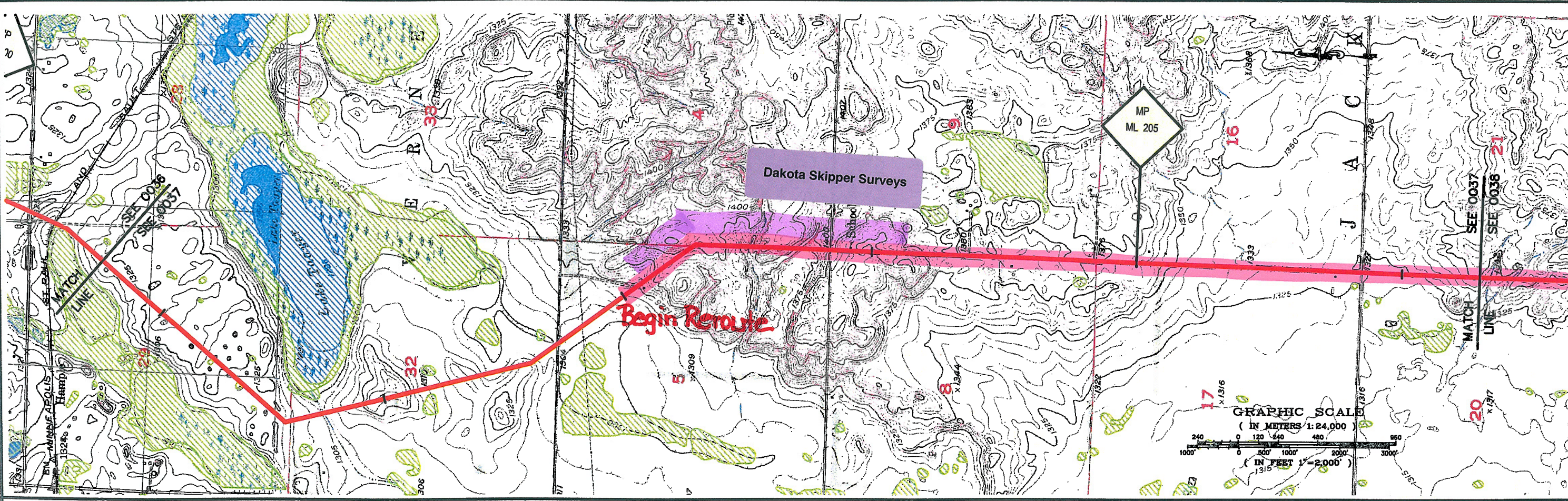
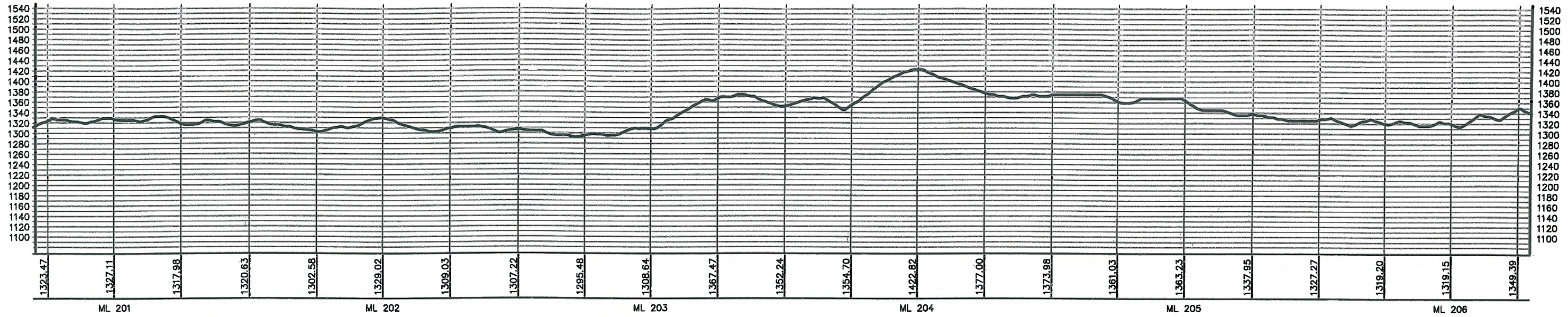
Table 1  
North Dakota Special Status Species  
Habitat by County and Mainline Milepost  
Keystone Pipeline Project

Species	Status	Suggested Survey Period	Survey Frequency	Survey Protocol Summary	Survey Counties	Miles (mi) of Associated Habitat Crossed by Keystone Pipeline Project					Mainline Milepost(s)
						Grassland (mi)	Forests and Woodlands (mi)	Riparian (mi)	Nonforested Emergent Wetland (mi) <sup>1</sup>	Open Water (mi) (habitat crossed or within 0.5 mi)	
<b>Bald eagle</b> <i>Haliaeetus leucocephalus</i>	FT; ND-SC	Nesting sites: 1-Feb to 15-Aug.  Winter roost sites: 1-Nov. to 1-April	Conduct breeding and winter roost surveys if construction occurs during the breeding season/ winter roost season along river corridors only	One-mile upstream and one-mile downstream of suitable habitat crossed by project	Pembina Ransom Walsh					Pembina: 0.8 (Pembina River, Tongue River) Ransom: 0.2 (Sheyenne River) Walsh: 0.3 (S. Branch Park River, N. Branch Forest River, Middle Branch Forest River)	Pembina: 7.1(Pembina River); 18.2-18.9 (Tongue River) Ransom: 166.9 - 167.0 (Sheyenne River) Walsh: 41.6 (S. Branch Forest River); 46.3 (N. Branch Forest River); 54.5 (M. Branch Forest River)
<b>Dakota skipper</b> <i>Hesperia dacotae</i>	FC; ND-SC	Flying Period: mid-June to Aug 1  Peak: 1st week of July	One ground survey prior to construction	Suitable native prairie within 100 meters of ROW	Sargent	Sargent: 8.4					Sargent: 203.1-214.8
<b>Western prairie fringed orchid</b> <i>Platanthera praeclara</i>	FT; ND-SC	Flowering Period: 15-June to 15-July	One ground survey prior to construction	Suitable native prairie within ROW. Results of survey should be submitted to the State Service Field Office to determine if further section 7 consultation is necessary	Ransom	Ransom: 0			<i>data pending</i>		Ransom: data pending

<sup>1</sup> Data pending; waiting on completion of wetland/waterbody surveys to determine total wetland habitat crossed by project.



ELEVATIONS SHOWN IN FEET - VERTICAL=10x HORIZONTAL SCALE



PREPARED BY:  
**TROW ENGINEERING CONSULTANTS, INC.**  
 1300 Metropolitan Boulevard, Suite 200  
 Tallahassee, Florida 32308  
 Phone: 1-850-385-5441  
 Fax: 1-850-385-5523

NO.	REVISION	DATE
0	ISSUED FOR DEPARTMENT OF STATE FILING	MAR.13.08

DRAWING NUMBER	DRAWN BY	CHECKED BY
K-38-P-900-A-0037	AH	BLS

**TransCanada**  
In business to deliver

**KEYSTONE PIPELINE PROJECT  
PROPOSED ROUTE BOOK**

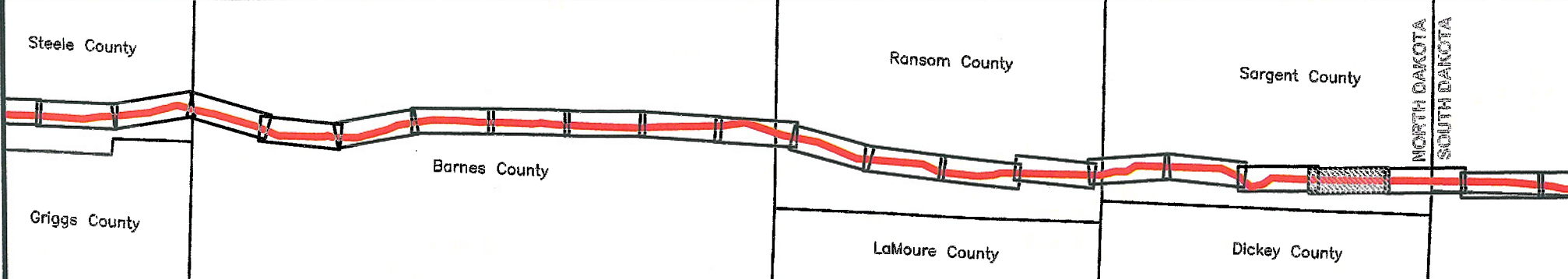
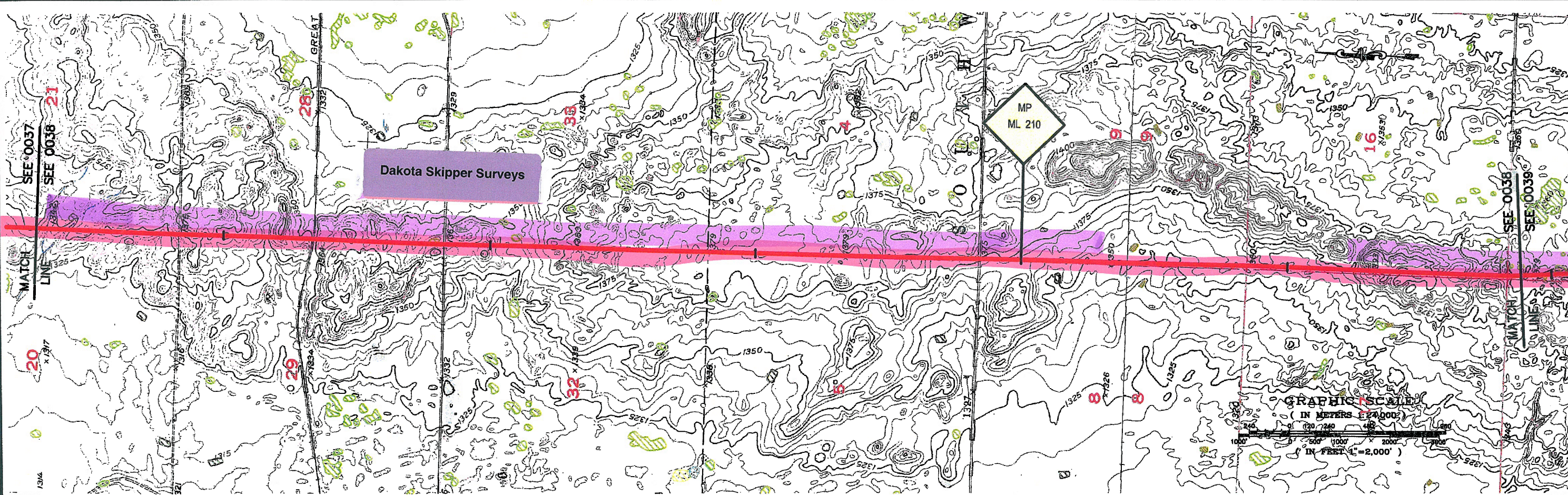
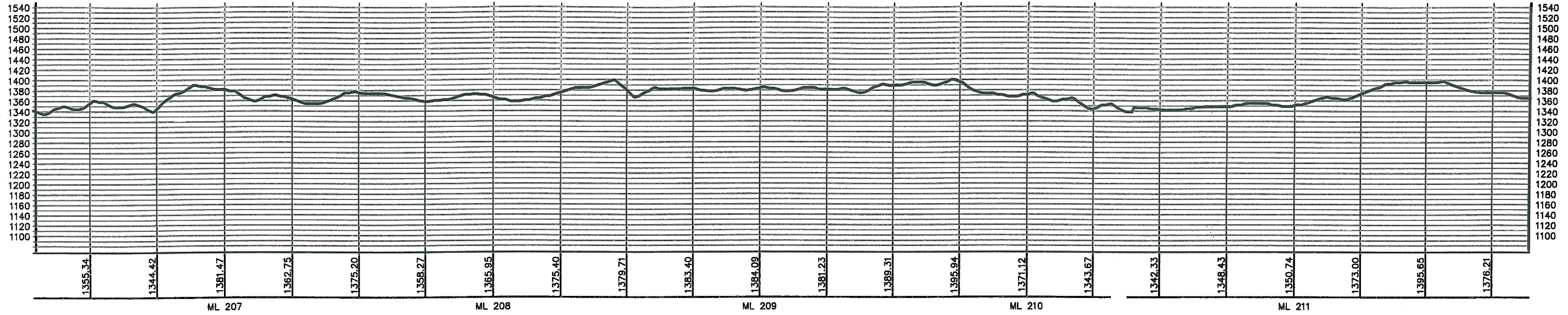
MAP PARAMETERS  
PROJECTION: NAD83, UTM: 14N  
SCALE: 1:24,000; 1" = 2,000'

PROJECT: 50388E	SHEET: 0037
APPROVED BY: RG	LAST PLOT DATE: Tue, 07 Mar 2008 - 7:17pm


K:\Drawings\GOURBA\KEYSTONE\DRAWING FILES\DRAWINGS\34K MAP BOOKS\MAIN 2008 ISSUE\4-38-P-900-A-037-REV2.dwg 1/20/2008 5:41:35 PM EST



ELEVATIONS SHOWN IN FEET - VERTICAL=10x HORIZONTAL SCALE




PREPARED BY:  
**TROW ENGINEERING CONSULTANTS, INC.**  
1300 Metropolitan Boulevard, Suite 200  
Tallahassee, Florida 32308  
Phone: 1-850-385-5441  
Fax: 1-850-385-5523

  
**Trow**

NO.	REVISION	DATE

DRAWING NUMBER	DRAWN BY	CHECKED BY
K-38-P-900-A-0038	AH	BLS

 **TransCanada**  
*in business to deliver*

**KEYSTONE PIPELINE PROJECT  
PROPOSED ROUTE BOOK**

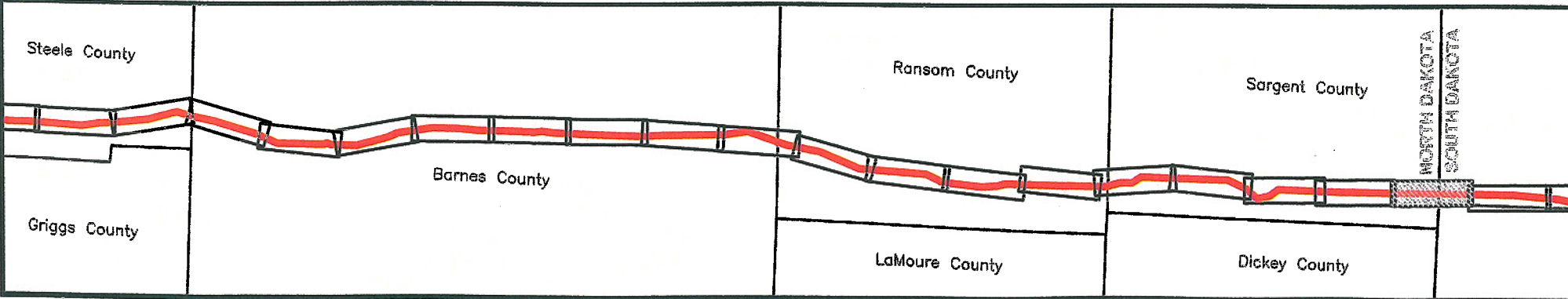
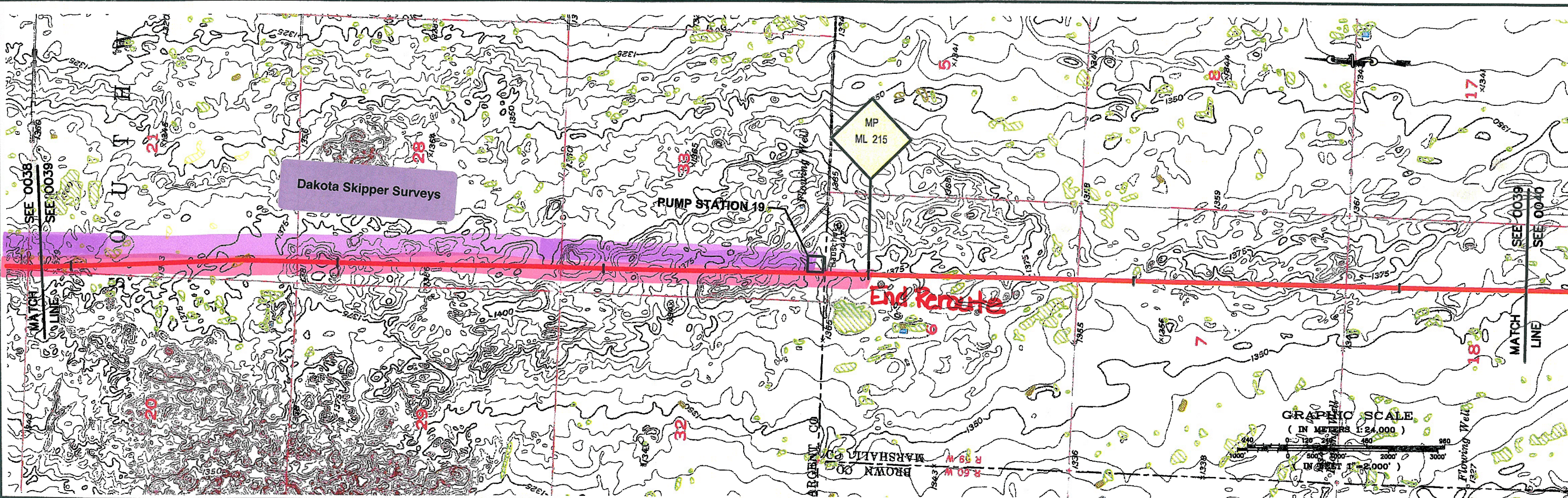
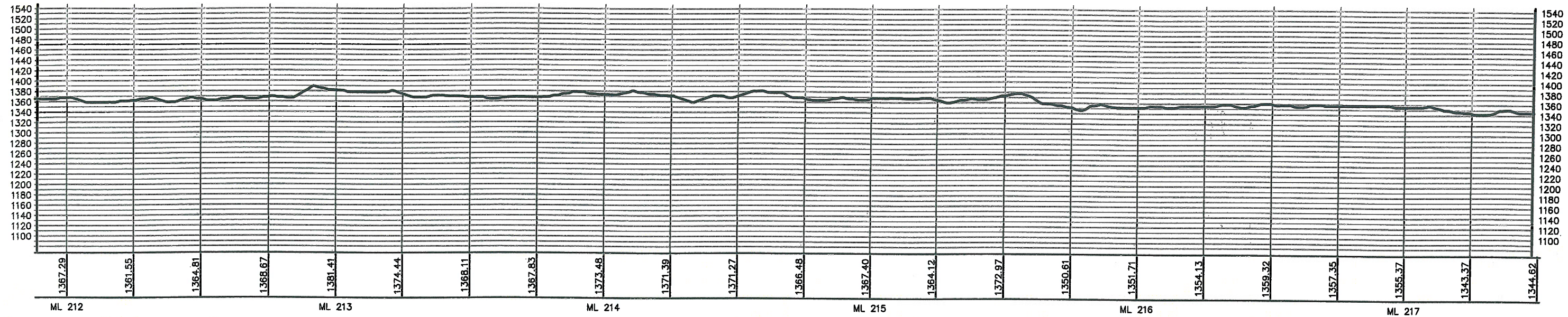
MAP PARAMETERS  
PROJECTION: NAD83, UTM: 14N  
SCALE: 1:24,000; 1" = 2,000'

PROJECT:	50388E
SHEET:	<b>0038</b>
APPROVED BY:	RG
ISSUED FOR DEPARTMENT OF STATE FILING	MAR.13.06
LAST PLOT DATE:	Tue, 07 Mar 2006 - 7:15pm

X:\Drawings\50388E\KEYSTONE\DRAWING FILES\DRAWINGS\24K MP BOOKS\JUN 2006 ISSUE\V-38-P-900-A-037-REV2.dwg 1/20/2006 5:41:33 PM EST



ELEVATIONS SHOWN IN FEET - VERTICAL=10x HORIZONTAL SCALE



PREPARED BY:  
**TROW ENGINEERING CONSULTANTS, INC.**  
1300 Metropolitan Boulevard, Suite 200  
Tallahassee, Florida 32308  
Phone: 1-850-385-5441  
Fax: 1-850-385-5523

NO.	REVISION	DATE

0	ISSUED FOR DEPARTMENT OF STATE FILING	MAR.13.06
DRAWING NUMBER	DRAWN BY	CHECKED BY
K-38-P-900-A-0039	AH	BLS

**TransCanada**  
*In business to deliver*

**KEYSTONE PIPELINE PROJECT  
PROPOSED ROUTE BOOK**

MAP PARAMETERS  
PROJECTION: NAD83, UTM: 14N  
SCALE: 1:24,000; 1" = 2,000'

PROJECT:	50388E
SHEET:	<b>0039</b>
APPROVED BY:	RG
LAST PLOT DATE:	Sun, 19 Mar 2006 - 4:22pm

X:\Drawings\030388E\KEYSTONE\DRAWING FILES\DRAWINGS\24K MP BOOKS\14N-38-P-900-A-037-REV2.dwg 1/20/2006 5:41:33 PM EST