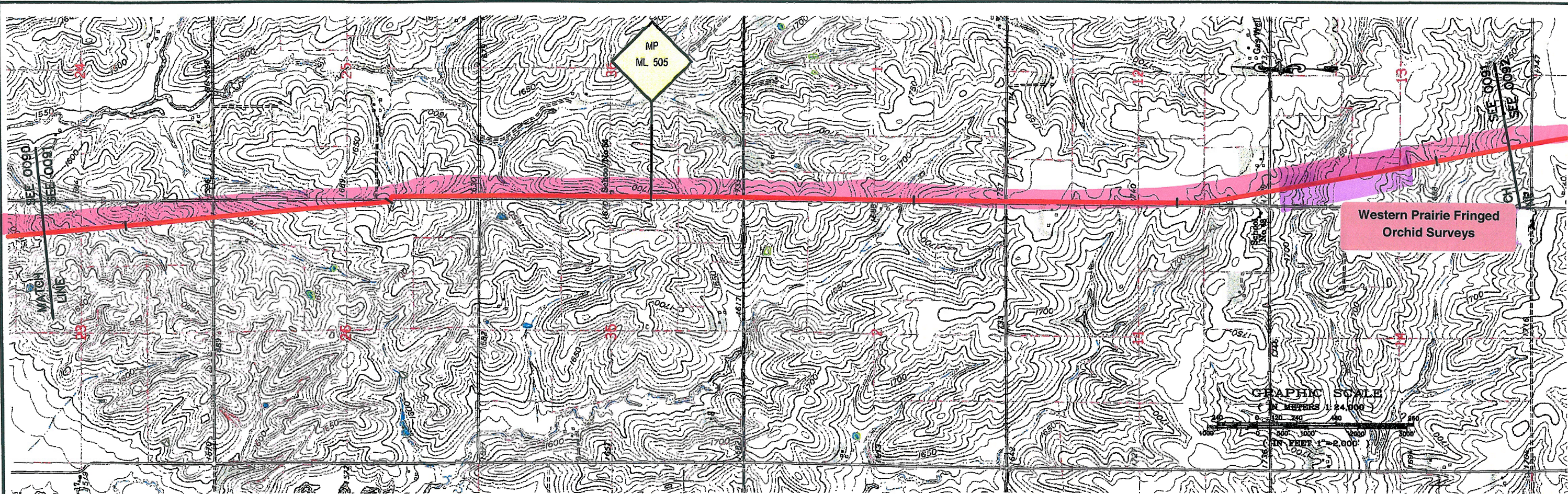
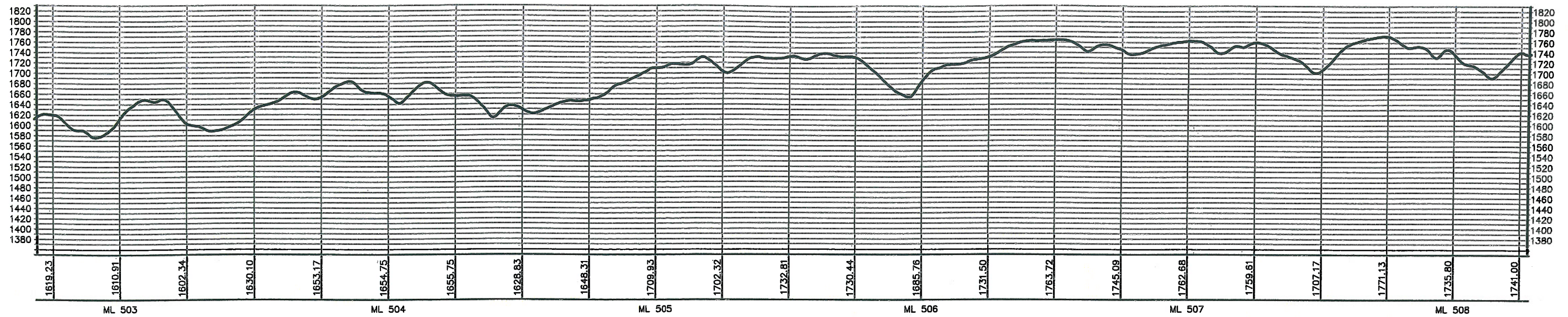
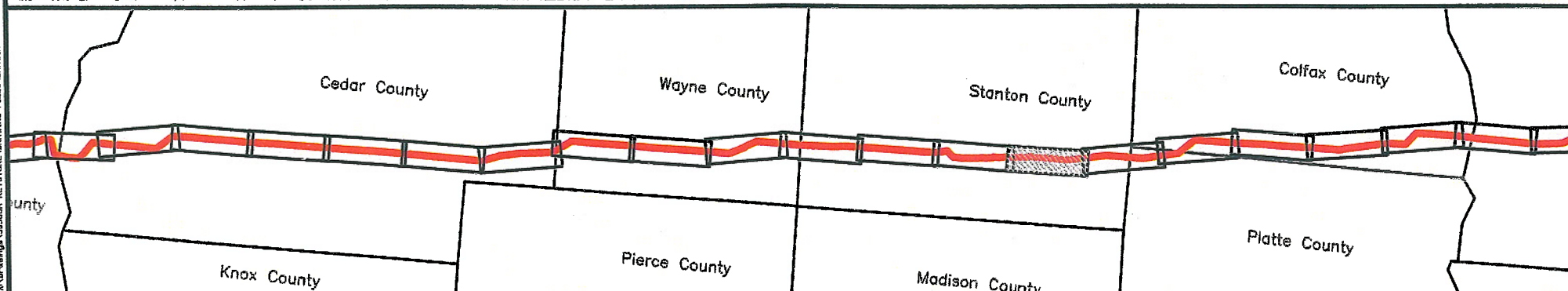


ELEVATIONS SHOWN IN FEET - VERTICAL=10x HORIZONTAL SCALE

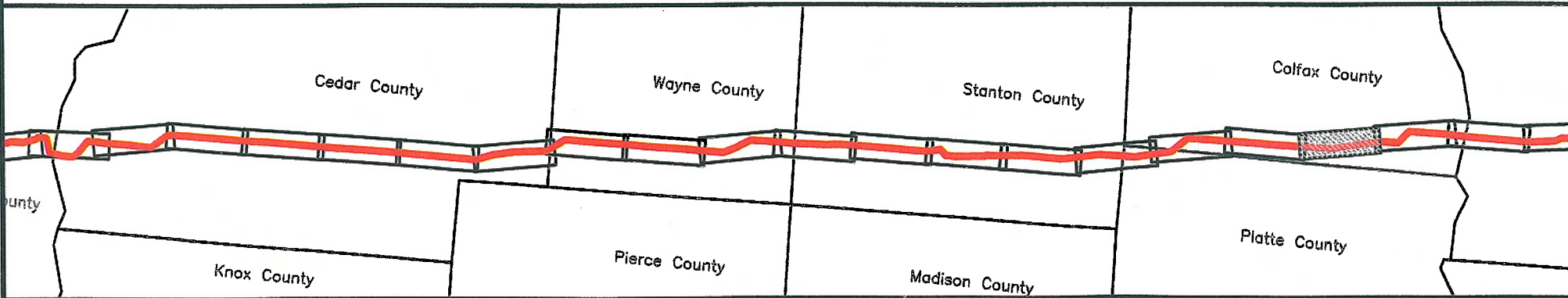
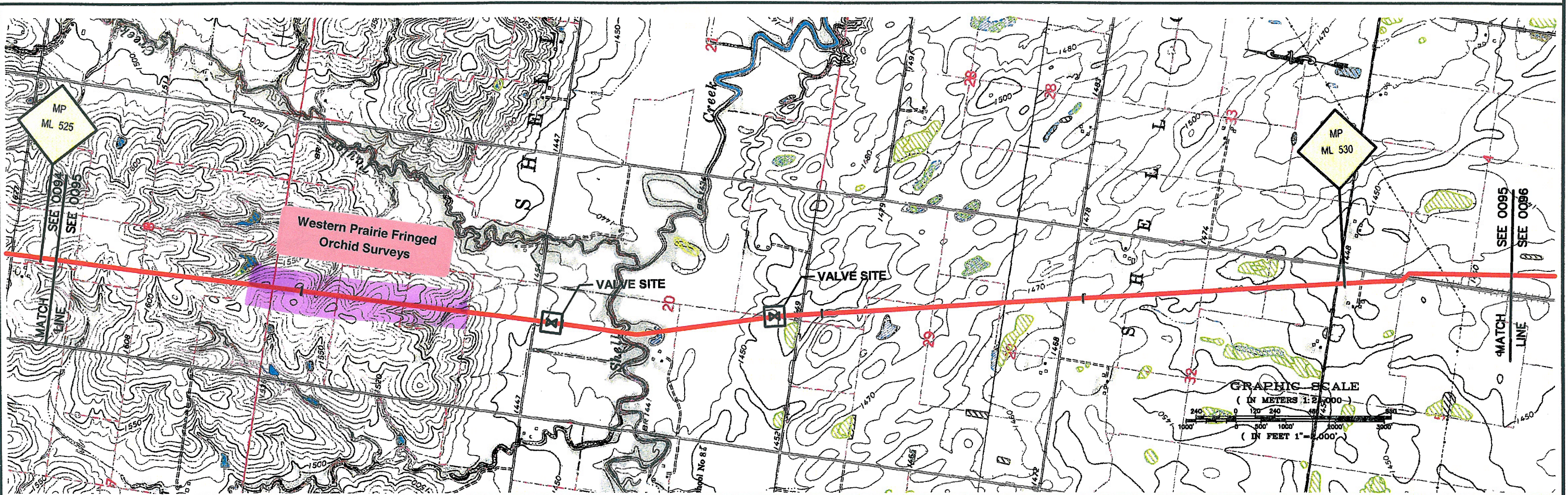
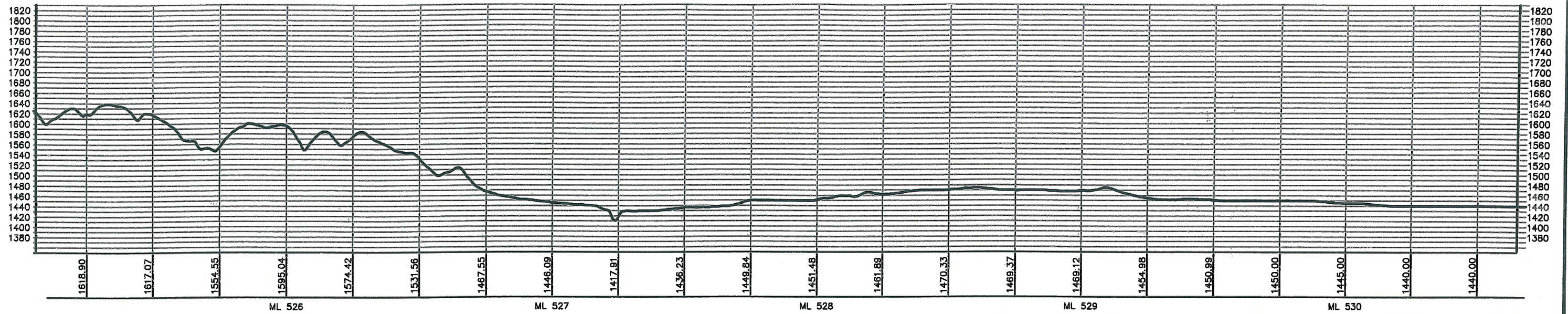


X:\p\m\g\A\SUBBBA - KEYSTONE\DRAWING FILES\DRAWINGS\24K MAP BOOKS\JAN 2006 ISSUE\K-31-P-900-A-09B-REV2.dwg 1/20/2006 10:59:59 PM EST



PREPARED BY: TROW ENGINEERING CONSULTANTS, INC. 1300 Metropolitan Boulevard, Suite 200 Tallahassee, Florida 32308 Phone: 1-850-385-5441 Fax: 1-850-385-5523			 Trow		 in business to deliver	
KEYSTONE PIPELINE PROJECT PROPOSED ROUTE BOOK						
MAP PARAMETERS PROJECTION: NAD83, UTM: 14N SCALE: 1:24,000; 1" = 2,000'						
PROJECT: 50388E			SHEET: 0091			
DRAWING NUMBER: K-31-P-900-A-0014			DRAWN BY: BEK		CHECKED BY: BLS	
APPROVED BY: RG			LAST PLOT DATE: Sun, 19 Mar 2006 - 4:07pm			

ELEVATIONS SHOWN IN FEET - VERTICAL=10x HORIZONTAL SCALE



PREPARED BY:
TROW ENGINEERING CONSULTANTS, INC.
 1300 Metropolitan Boulevard, Suite 200
 Tallahassee, Florida 32308
 Phone: 1-850-385-5441
 Fax: 1-850-385-5523



**KEYSTONE PIPELINE PROJECT
 PROPOSED ROUTE BOOK**

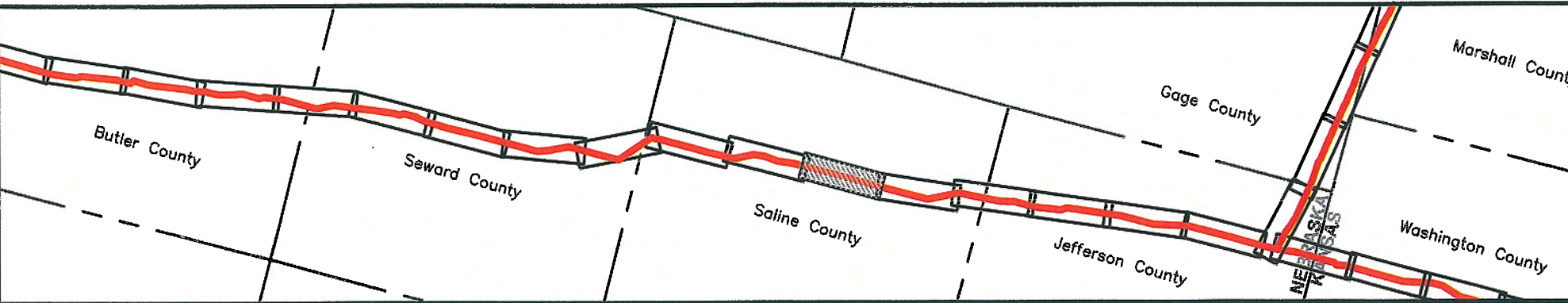
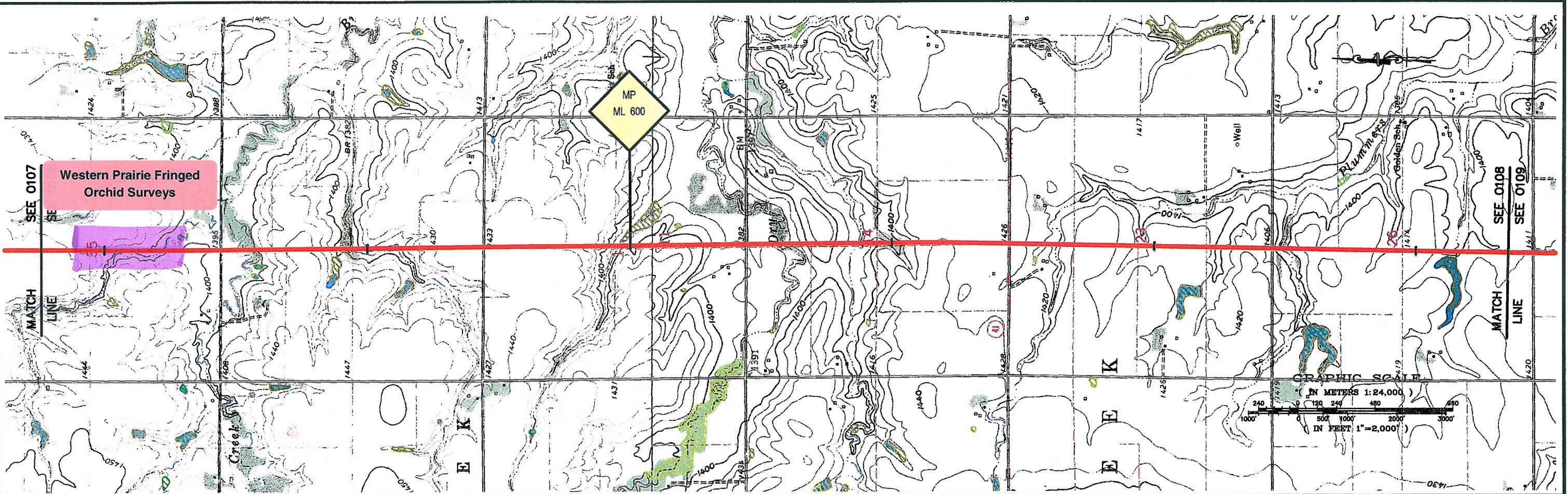
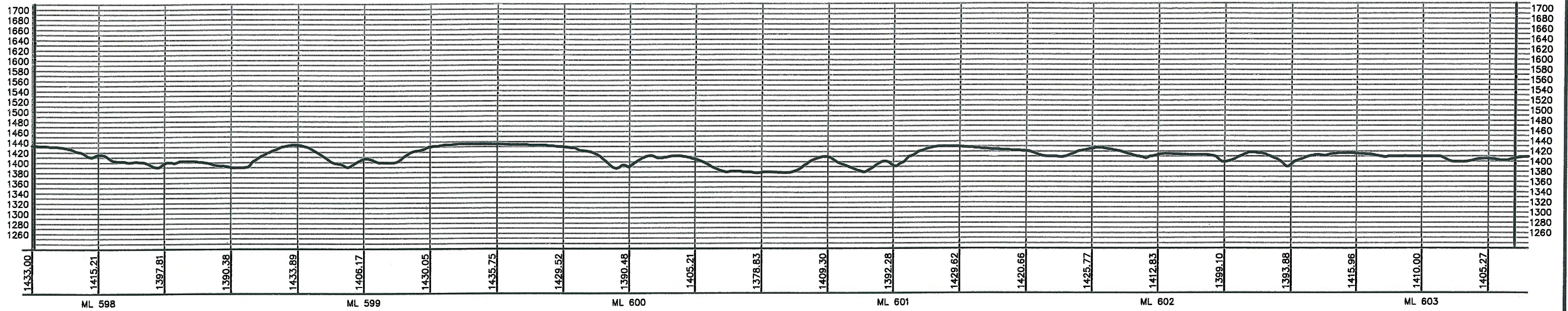
MAP PARAMETERS
 PROJECTION: NAD83, UTM: 14N
 SCALE: 1:24,000; 1" = 2,000'

NO.	REVISION	DATE
0	ISSUED FOR DEPARTMENT OF STATE FILING	MAR.13.06
DRAWING NUMBER	DRAWN BY	CHECKED BY
K-31-P-900-A-0018	BEK	BLS

PROJECT:	50388E
SHEET:	0095
APPROVED BY:	RG
LAST PLOT DATE:	Sun, 19 Mar 2006 - 4:20pm

X:\Drawings\GIS\BIBBA\KEYSTONE\DRAWING FILES\DRAWINGS\LEAK_MP_BIBBA\JUN 2006\ISSUE\03-19-06-A-994-REV2.dwg 1/20/2006 10:05:09 PM EST

ELEVATIONS SHOWN IN FEET - VERTICAL=10x HORIZONTAL SCALE



PREPARED BY:
TROW ENGINEERING CONSULTANTS, INC.
1300 Metropolitan Boulevard, Suite 200
Tallahassee, Florida 32308
Phone: 1-850-385-5441
Fax: 1-850-385-5523

NO.	REVISION	DATE

ISSUED FOR DEPARTMENT OF STATE FILING MAR.13.06

DRAWING NUMBER	DRAWN BY	CHECKED BY	APPROVED BY
K-31-P-900-A-0031	BEK	BLS	RG

TransCanada
In business to deliver

**KEYSTONE PIPELINE PROJECT
PROPOSED ROUTE BOOK**

MAP PARAMETERS
PROJECTION: NAD83, UTM: 14N
SCALE: 1:24,000; 1" = 2,000'

PROJECT: 50388E SHEET: 0108

LAST PLOT DATE:
Tue, 07 Mar 2006 - 11:42pm