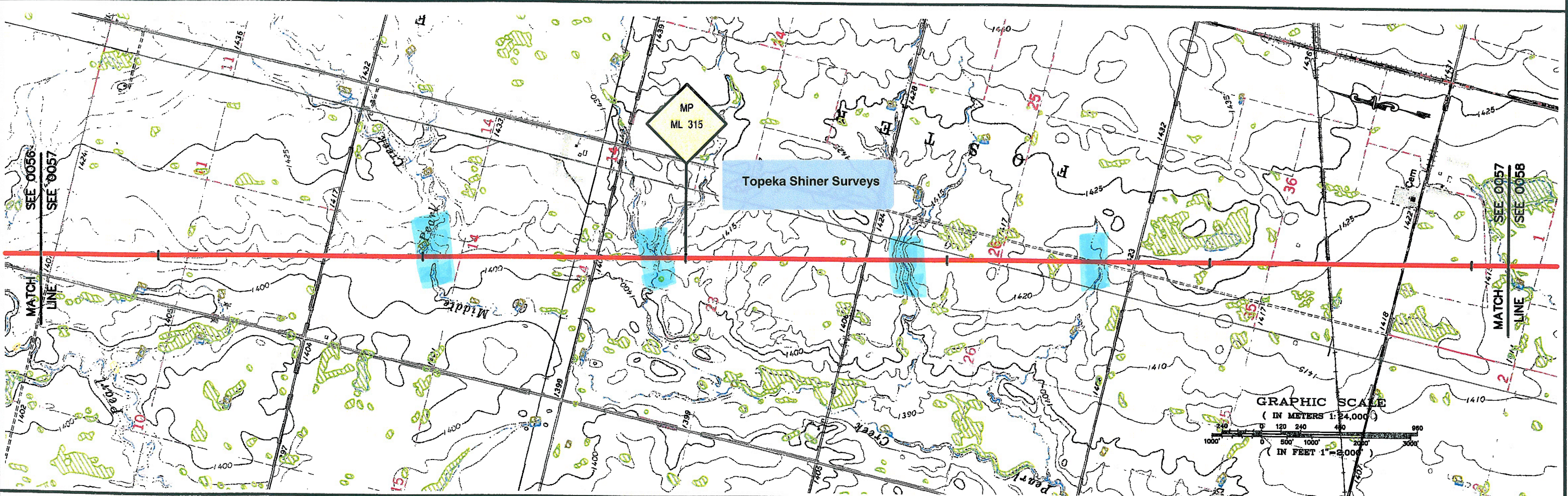
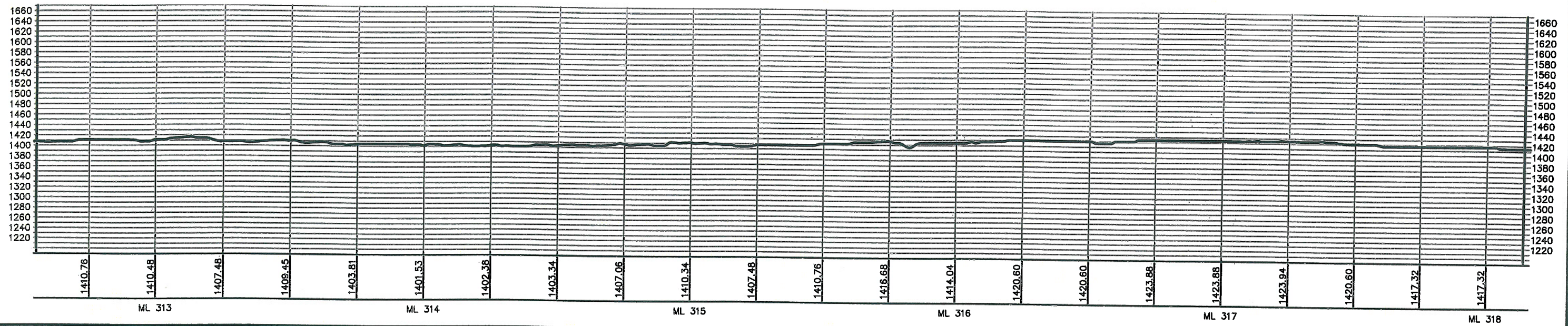
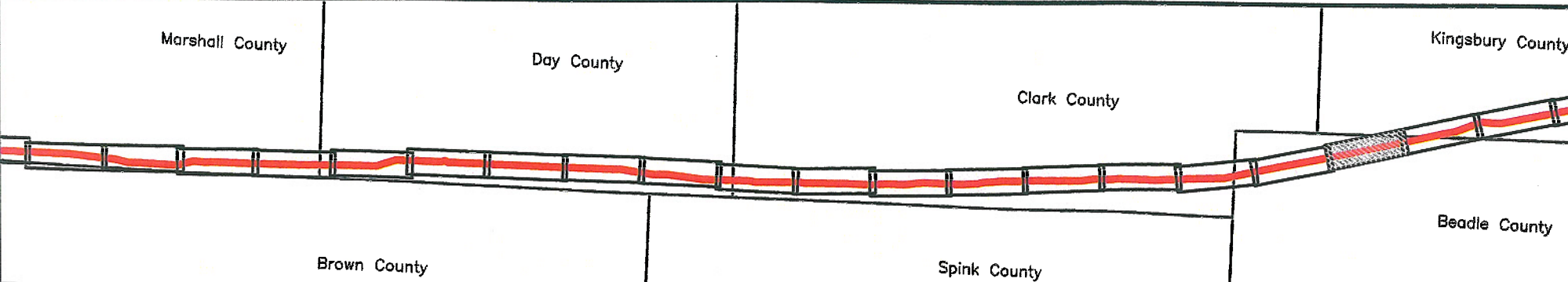


ELEVATIONS SHOWN IN FEET - VERTICAL=10x HORIZONTAL SCALE

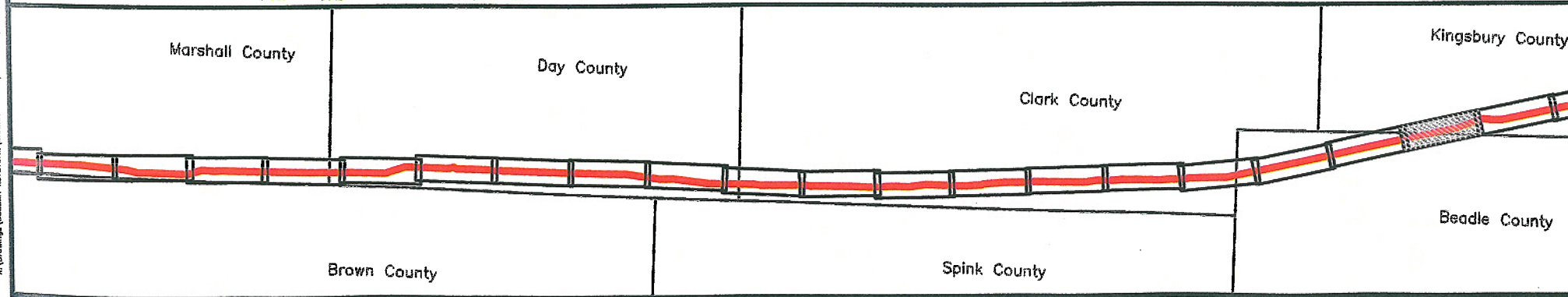
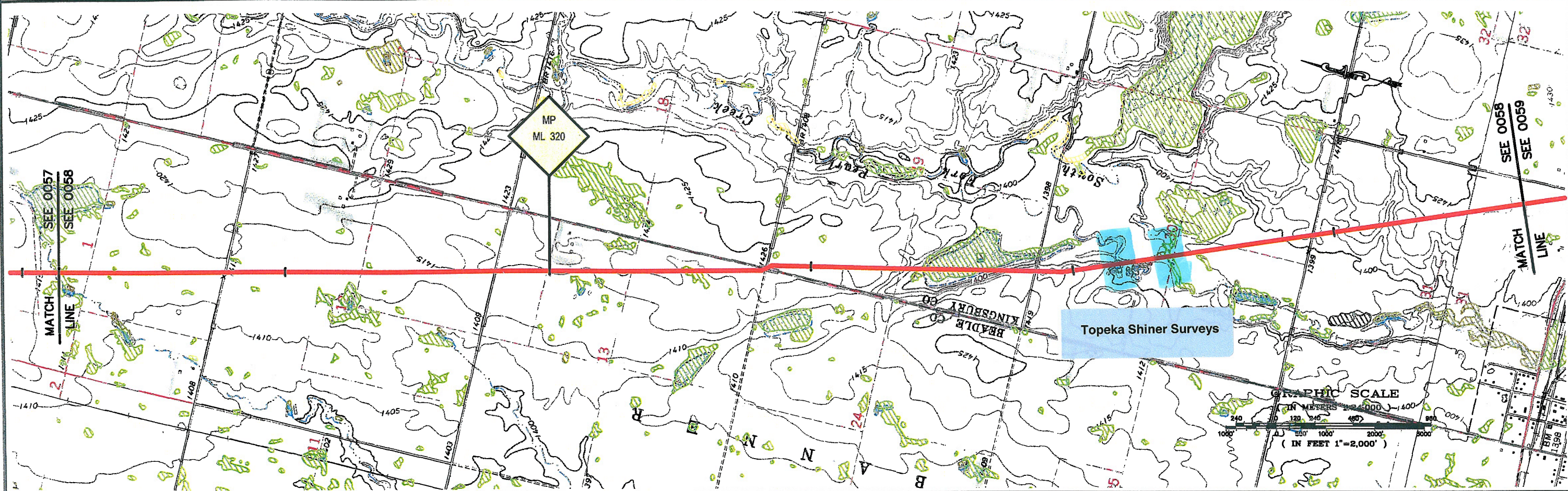
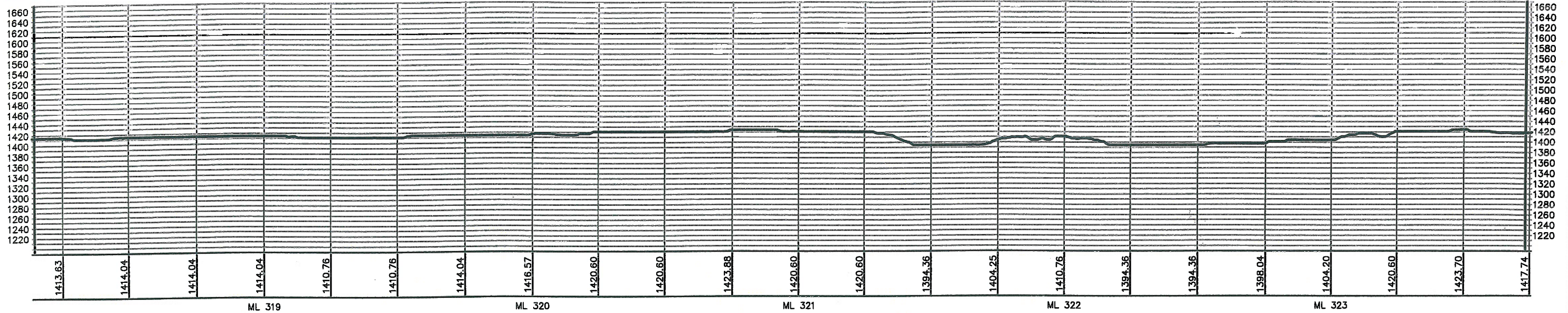


X:\Drawing\50388A\KESTONE\DRAWING FILES\DOMINICK\K-46-P-900-A-005-REV2.dwg 3/7/2006 9:10:04 PM EST



PREPARED BY: TROW ENGINEERING CONSULTANTS, INC. 1300 Metropolitan Boulevard, Suite 200 Tallahassee, Florida 32308 Phone: 1-850-385-5441 Fax: 1-850-385-5523			 Trow	 TransCanada <i>In business to deliver</i>	
NO. REVISION DATE			KEYSTONE PIPELINE PROJECT PROPOSED ROUTE BOOK		
0 ISSUED FOR DEPARTMENT OF STATE FILING MAR.13.06			MAP PARAMETERS PROJECTION: NAD83, UTM: 14N SCALE: 1:24,000; 1" = 2,000'		
DRAWING NUMBER K-46-P-900-A-0018		DRAWN BY AH	CHECKED BY RS	APPROVED BY DC	PROJECT: 50388E
SHEET: 0057			0057		
LAST PLOT DATE:			(Empty)		

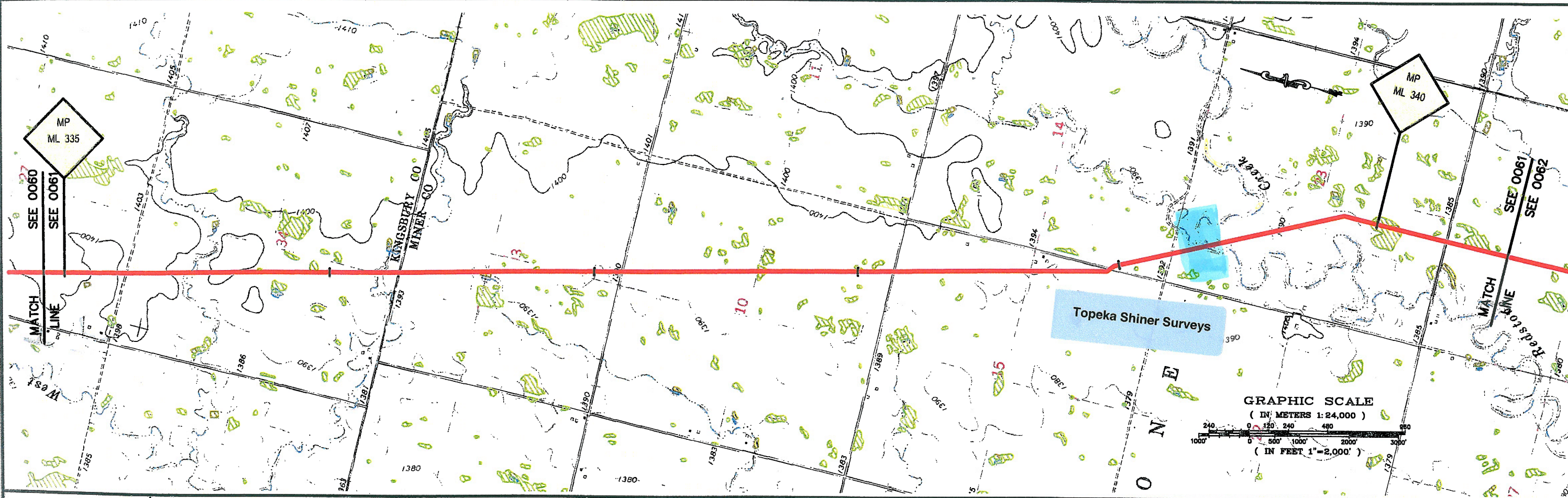
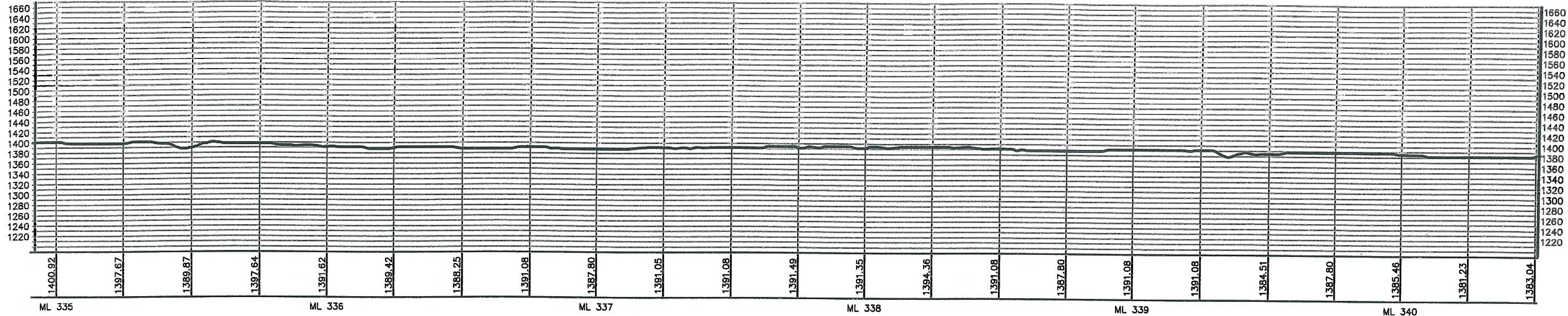
ELEVATIONS SHOWN IN FEET - VERTICAL=10x HORIZONTAL SCALE



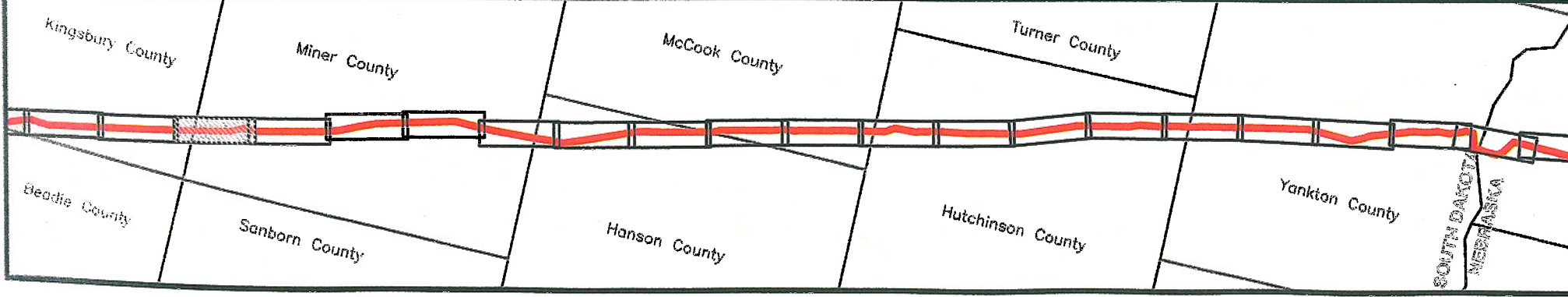
PREPARED BY: TROW ENGINEERING CONSULTANTS, INC. 1300 Metropolitan Boulevard, Suite 200 Tallahassee, Florida 32308 Phone: 1-850-385-5441 Fax: 1-850-385-5523			
NO. REVISION DATE		KEYSTONE PIPELINE PROJECT PROPOSED ROUTE BOOK	
0 ISSUED FOR DEPARTMENT OF STATE FILING MAR.13.06		MAP PARAMETERS PROJECTION: NAD83, UTM: 14N SCALE: 1:24,000; 1" = 2,000'	
DRAWING NUMBER K-46-P-900-A-0019	DRAWN BY AH	CHECKED BY BLS	APPROVED BY RG
PROJECT: 50388E		SHEET: 0058	
LAST PLOT DATE: Tue, 07 Mar 2006 - 10:24pm			

K:\Drawings\Subarea_KESTONE\DRAWING FILES\DRAWINGS\24K MAP BOOKS\MAR 2006 ISSUE\02-PROFILES\REVISED UTM 14N SOUTH DAKOTA\14-P-900-A-0019-REV.dwg 3/7/2006 9:10:04 PM EST

ELEVATIONS SHOWN IN FEET - VERTICAL = 10x HORIZONTAL SCALE



K:\Drawings\0061A.MXD\TROW\DRAWING\ELEVATIONS\K46-P-900-A-0022.dwg 3/7/2006 9:28:21 PM EST



PREPARED BY:
TROW ENGINEERING CONSULTANTS, INC.
 1300 Metropolitan Boulevard, Suite 200
 Tallahassee, Florida 32308
 Phone: 1-850-385-5441
 Fax: 1-850-385-5523

NO.	REVISION	DATE

ISSUED FOR DEPARTMENT OF STATE FILING	MAR.13.06		
DRAWING NUMBER	DRAWN BY	CHECKED BY	APPROVED BY
K-46-P-900-A-0022	BEK	BLS	RG

Trow

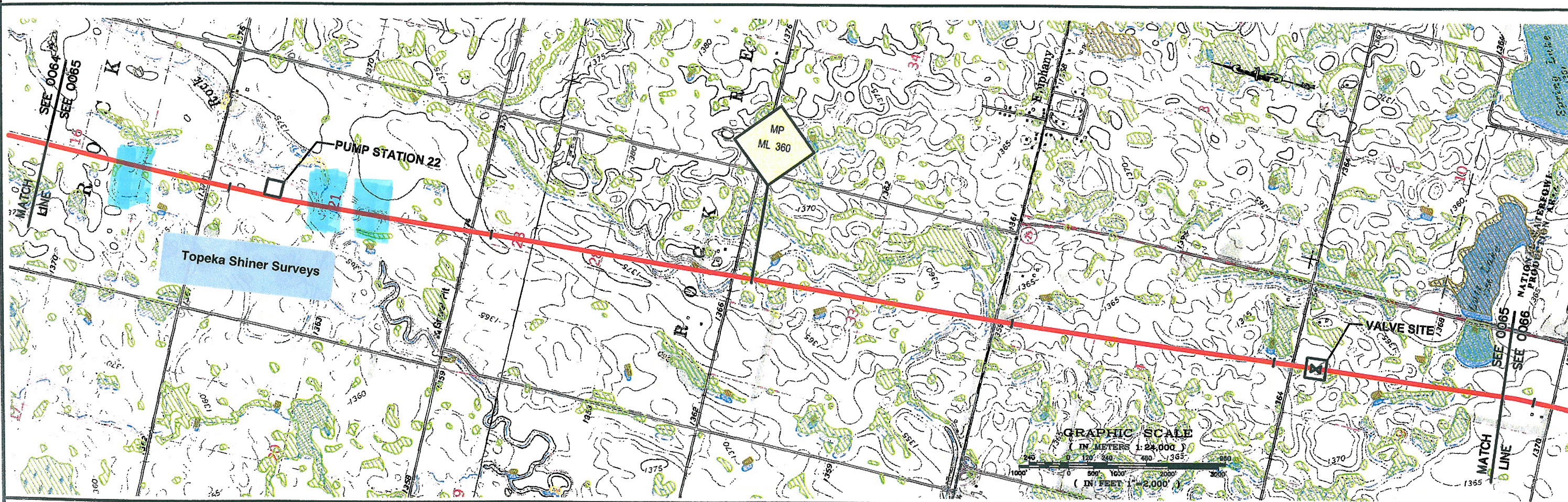
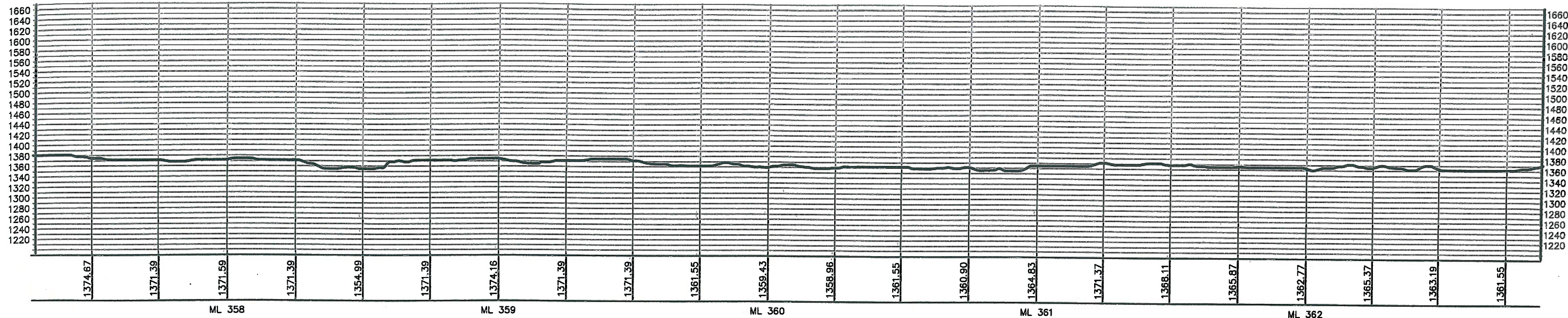
TransCanada
in business to deliver

**KEYSTONE PIPELINE PROJECT
PROPOSED ROUTE BOOK**

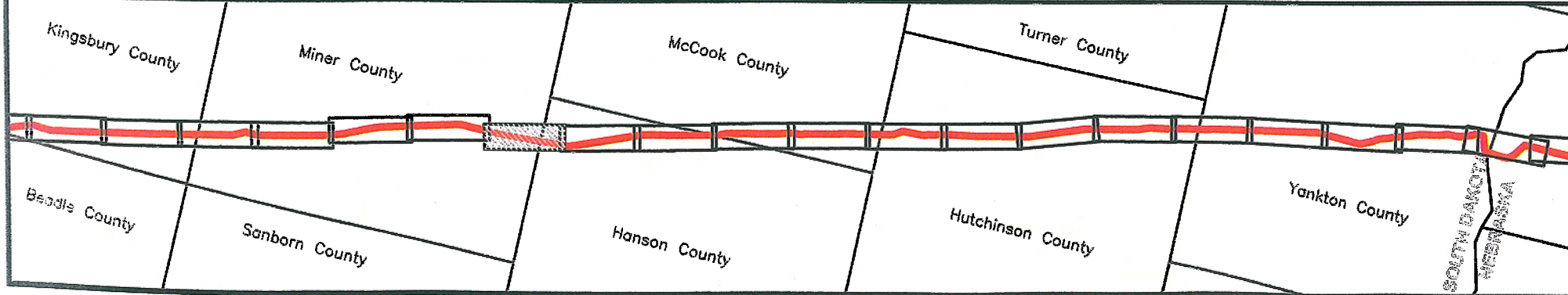
MAP PARAMETERS
 PROJECTION: NAD83, UTM: 14N
 SCALE: 1:24,000; 1" = 2,000'

PROJECT:	50388E	SHEET:	0061
LAST PLOT DATE: Tue, 07 Mar 2006 - 9:50pm			

ELEVATIONS SHOWN IN FEET - VERTICAL = 10x HORIZONTAL SCALE



K:\Drawings\SALE\K-46\K-46-0026-DRAWING FILES\DRAWINGS\K-46-P-900-A-0026.dwg 3/7/2006 10:26:01 PM EST



PREPARED BY:
TROW ENGINEERING CONSULTANTS, INC.
 1300 Metropolitan Boulevard, Suite 200
 Tallahassee, Florida 32308
 Phone: 1-850-385-5441
 Fax: 1-850-385-5523

NO.	REVISION	DATE
0	ISSUED FOR DEPARTMENT OF STATE FILING	MAR.13.06

DRAWING NUMBER	DRAWN BY	CHECKED BY	APPROVED BY
K-46-P-900-A-0026	BEK	BLS	RG

TransCanada
In business to deliver

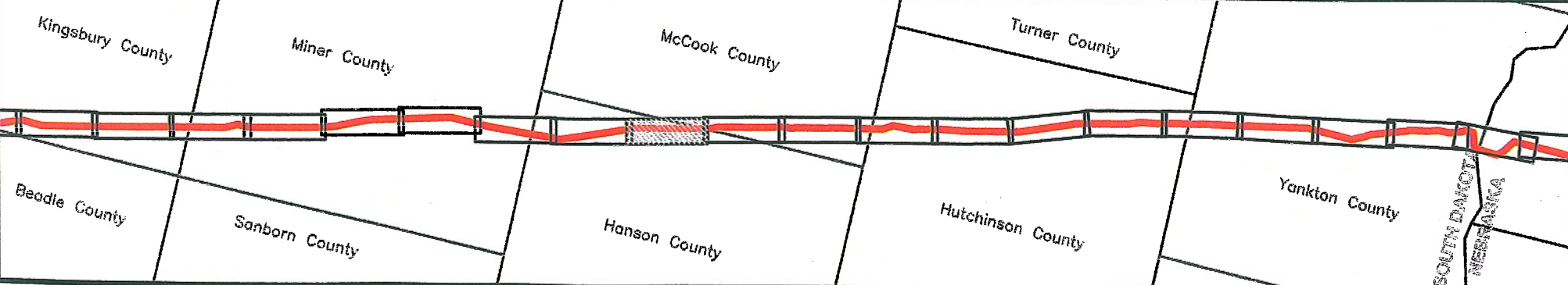
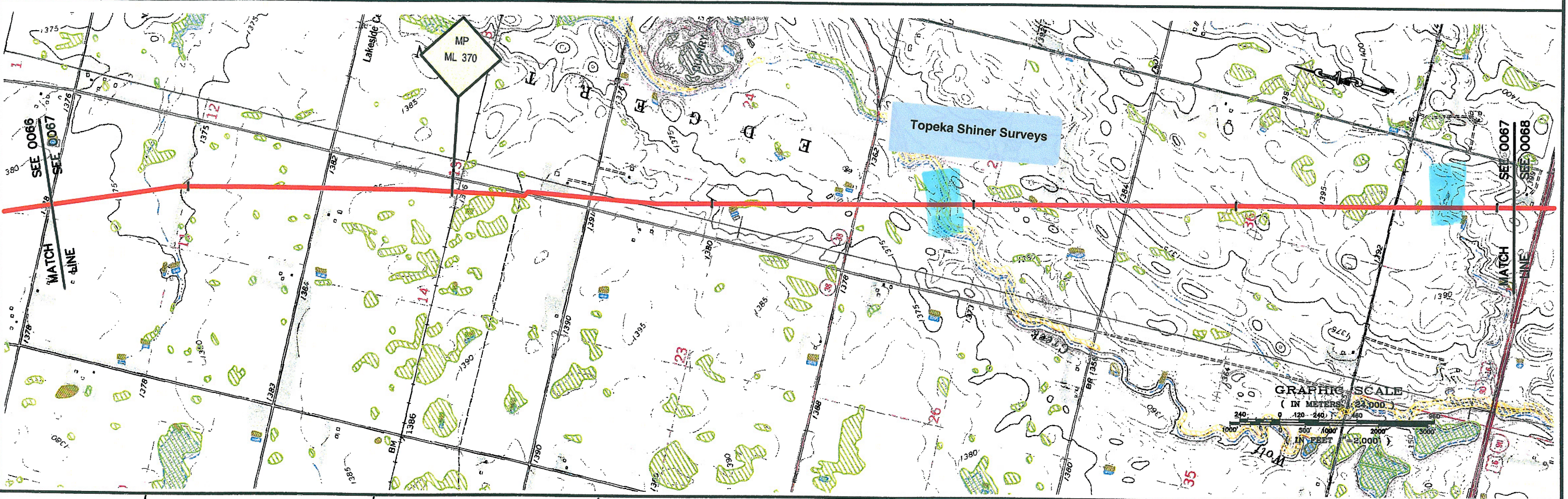
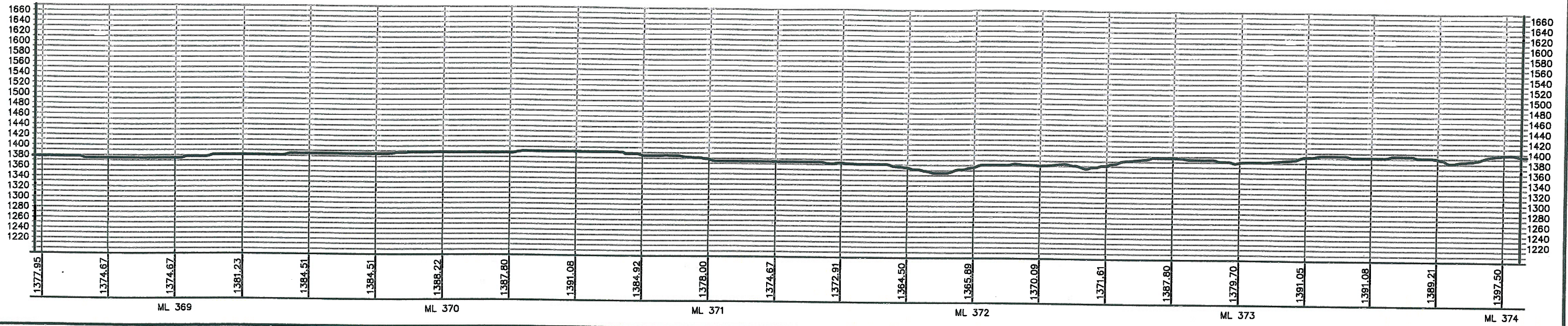
**KEYSTONE PIPELINE PROJECT
 PROPOSED ROUTE BOOK**

MAP PARAMETERS
 PROJECTION: NAD83, UTM: 14N
 SCALE: 1:24,000; 1" = 2,000'

PROJECT:	50388E
SHEET:	0065

LAST PLOT DATE:
 Sun, 19 Mar 2006 - 3:58pm

ELEVATIONS SHOWN IN FEET - VERTICAL = 10x HORIZONTAL SCALE



PREPARED BY:
TROW ENGINEERING CONSULTANTS, INC.
 1300 Metropolitan Boulevard, Suite 200
 Tallahassee, Florida 32308
 Phone: 1-850-385-5441
 Fax: 1-850-385-5523

Trow

NO.	REVISION	DATE

DRAWING NUMBER	DRAWN BY	CHECKED BY	APPROVED BY
K-46-P-900-A-0028	BEK	BLS	RG

TransCanada
In business to deliver

**KEYSTONE PIPELINE PROJECT
 PROPOSED ROUTE BOOK**

MAP PARAMETERS
 PROJECTION: NAD83, UTM: 14N
 SCALE: 1:24,000; 1" = 2,000'

PROJECT:	SHEET:
ISSUED FOR DEPARTMENT OF STATE FILING	50388E
MAR-13-06	0067
LAST PLOT DATE:	Tue, 07 Mar 2006 - 11:11pm

K:\Drawings\50388A\KEYSTONE\DRAWING FILES\DRAWINGS\24H MAP BOOKS\MAR 2006 ISSUE\02-PROFILES\REVISED UTM 14\50388A-0064-REV2.dwg 3/7/2006 10:42:01 PM EST