

## Appendix A: Exhibits

Exhibit A 2.1-1: Vicinity Map and Overview of Project Area

Exhibit A 2.1-2: Aerial Photograph Map of Project Components – Sheet Map 1

Exhibit A 2.1-3: Aerial Photograph Map of Project Components – Sheet Map 2

Exhibit A 2.1-4: Aerial Photograph Map of Project Components – Sheet Map 3

Exhibit A 2.1-5: Aerial Photograph Map of Project Components – Sheet Map 4

Exhibit A 2.1-6: Aerial Photograph Map of Project Components – Sheet Map 5

Exhibit A 2.1-7: Aerial Photograph Map of Project Components – Sheet Map 6

Exhibit A 2.1-8: Topographic View of Project Components – Sheet Map 1

Exhibit A 2.1-9: Topographic View of Project Components – Sheet Map 2

Exhibit A 2.1-10: Topographic View of Project Components – Sheet Map 3

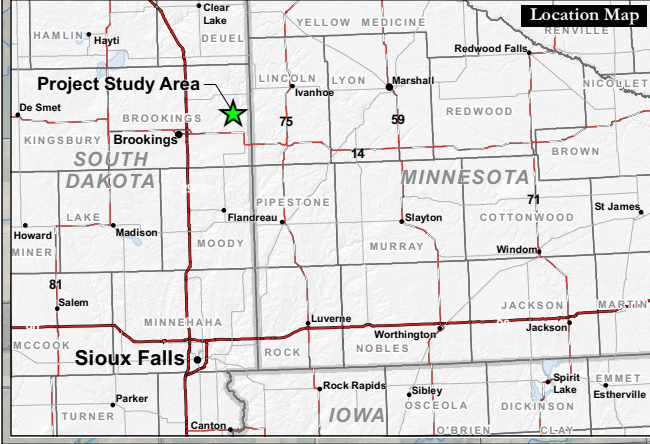
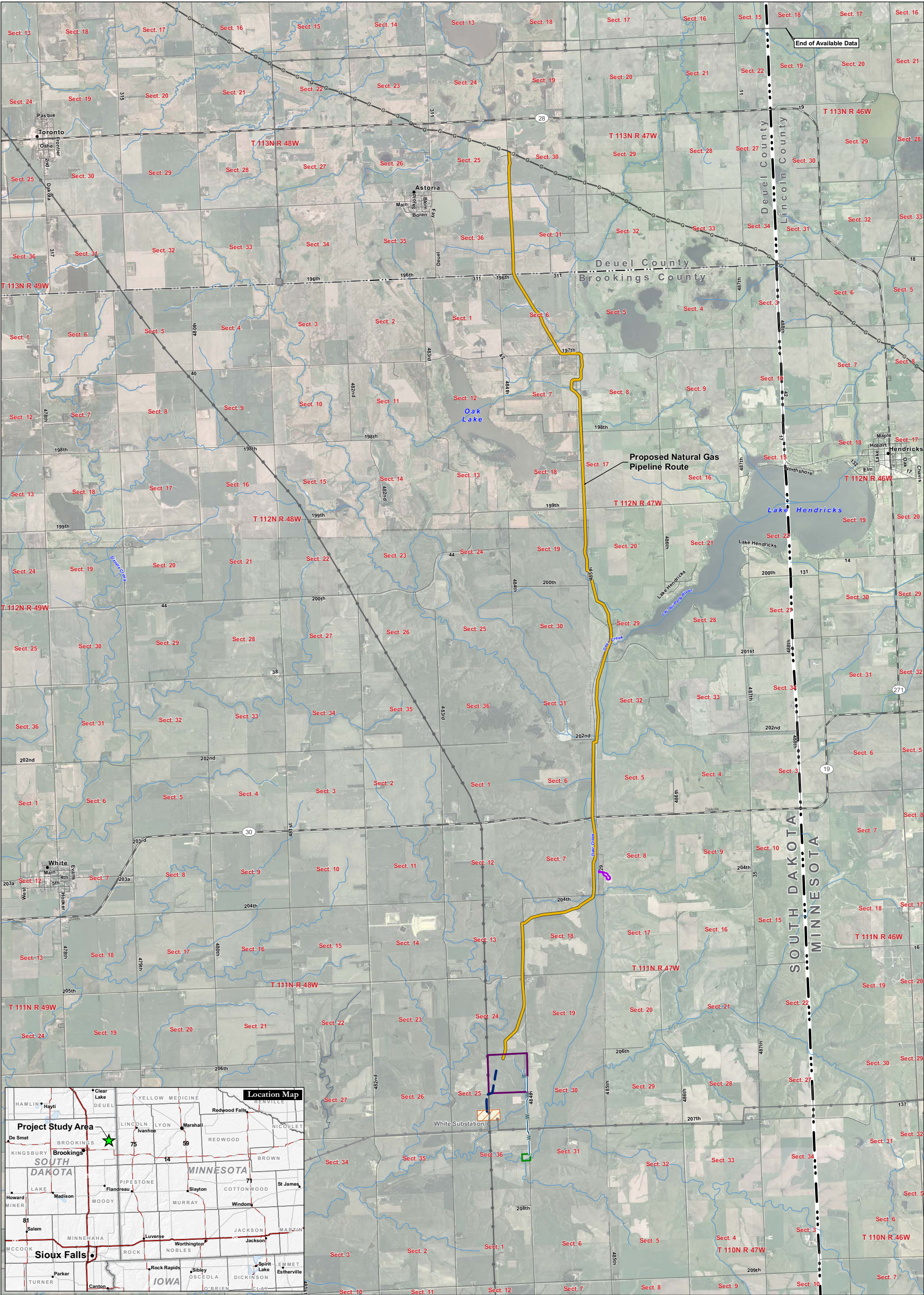
Exhibit A 2.1-11: Topographic View of Project Components – Sheet Map 4

Exhibit A 2.1-12: Topographic View of Project Components – Sheet Map 5

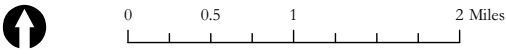
Exhibit A 2.1-13: Topographic View of Project Components – Sheet Map 6

This page intentionally left blank.





# Deer Creek Station Project



## Project Features

- Deer Creek Station Site
- Well Site
- Proposed Gas Pipeline Route
- Natural Gas Pipeline Laydown Area
- Proposed Transmission Route
- Proposed Process Water Pipeline Route

## Existing Utilities

- Northern Border Pipeline
- Substation
- East River Distribution
- Existing White Substation

- WAPA Transmission**
- 115kV
  - 345kV

## Transportation

- State Highway
- Major Road
- Local Road

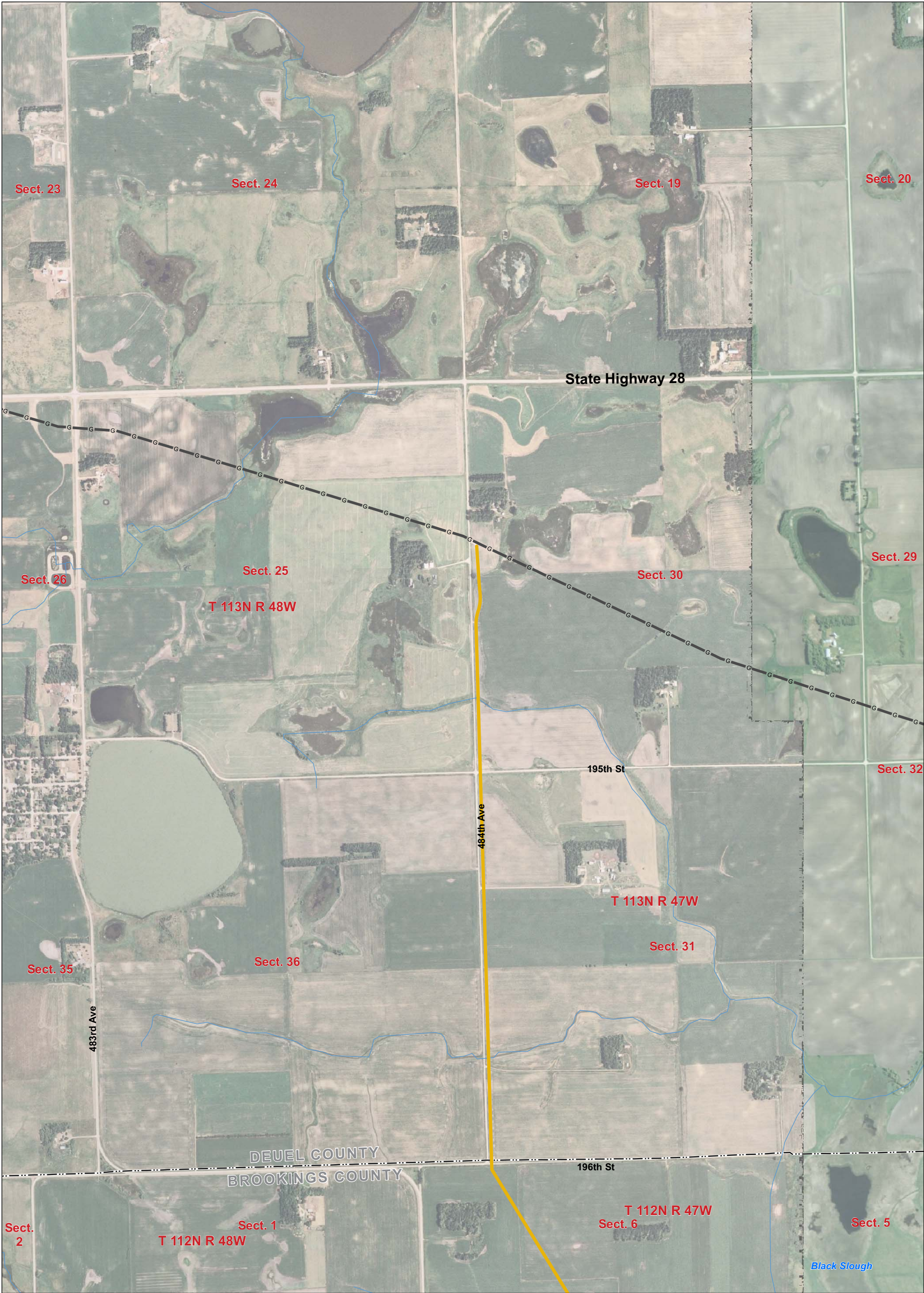


EDAW | AECOM

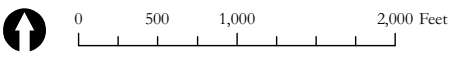




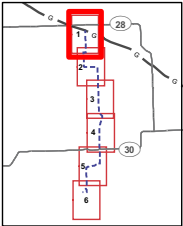




Deer Creek Station Project



- Project Features**
- Proposed Gas Pipeline Route
  - Natural Gas Pipeline Laydown Area
  - G Northern Border Pipeline
  - Deer Creek Station Site





**BASIN ELECTRIC  
POWER COOPERATIVE**

A Touchstone Energy® Cooperative



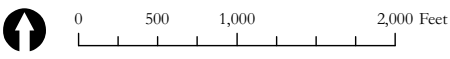




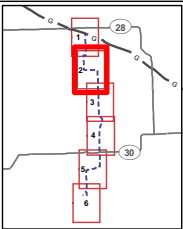




Deer Creek Station Project



- Project Features**
- Proposed Gas Pipeline Route
  - Natural Gas Pipeline Laydown Area
  - G Northern Border Pipeline
  - Deer Creek Station Site





**BASIN ELECTRIC  
POWER COOPERATIVE**

A Touchstone Energy® Cooperative



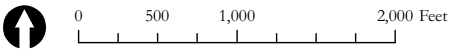






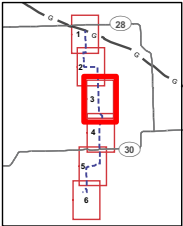


Deer Creek Station Project



Project Features

- Proposed Gas Pipeline Route
- Natural Gas Pipeline Laydown Area
- G — Northern Border Pipeline
- Deer Creek Station Site



EDAW | AECOM

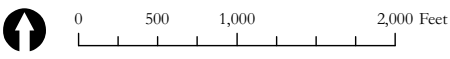




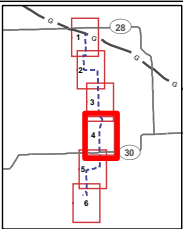




Deer Creek Station Project



- Project Features**
- Proposed Gas Pipeline Route
  - Natural Gas Pipeline Laydown Area
  - G Northern Border Pipeline
  - Deer Creek Station Site





**BASIN ELECTRIC  
POWER COOPERATIVE**

A Touchstone Energy® Cooperative



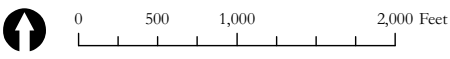




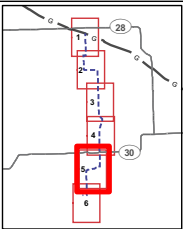




Deer Creek Station Project



- Project Features**
- Proposed Gas Pipeline Route
  - Natural Gas Pipeline Laydown Area
  - G Northern Border Pipeline
  - Deer Creek Station Site





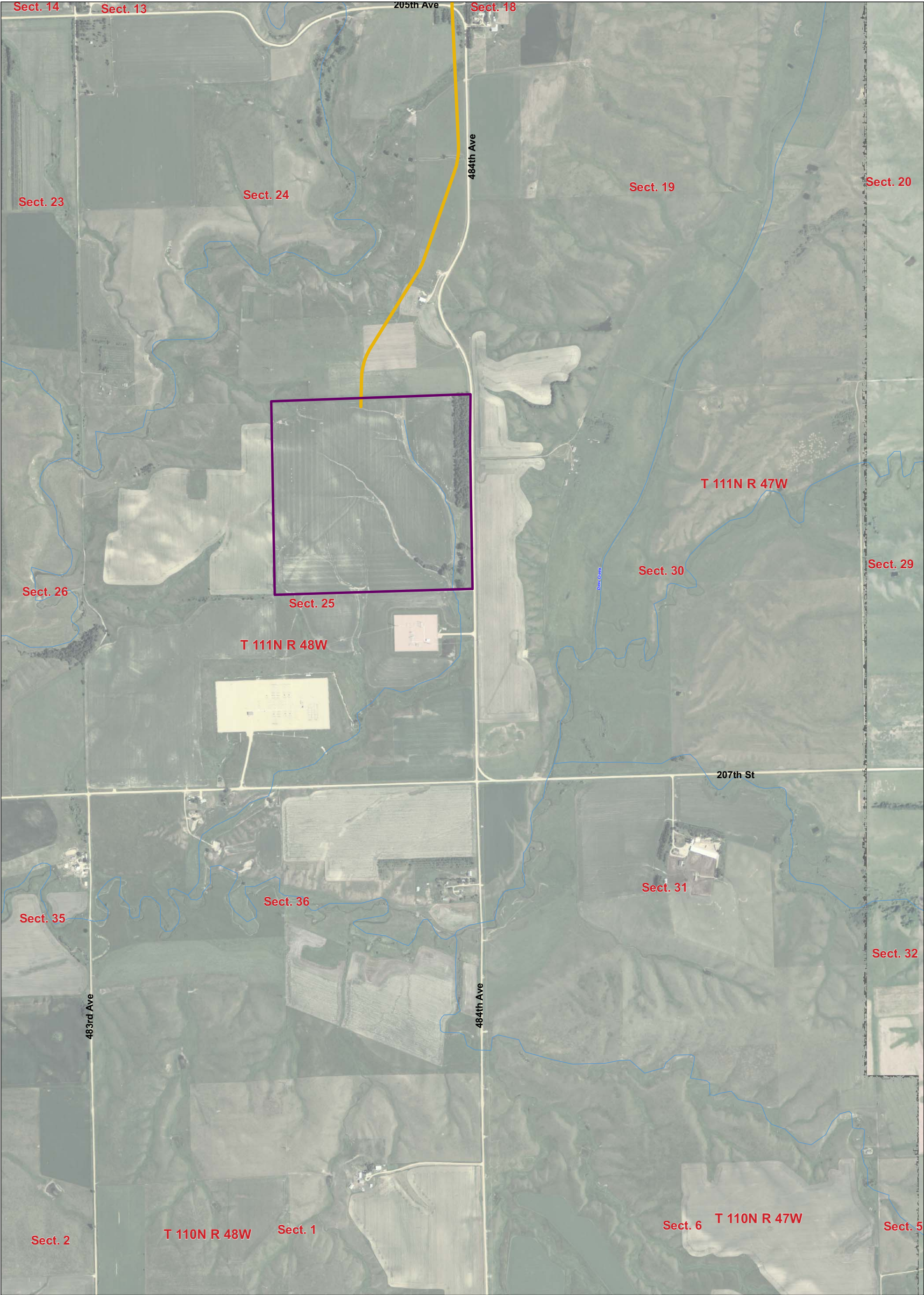
**BASIN ELECTRIC  
POWER COOPERATIVE**

A Touchstone Energy® Cooperative

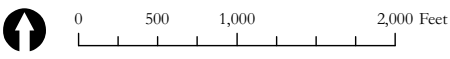




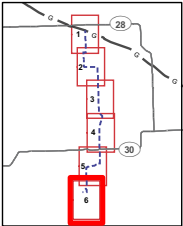




Deer Creek Station Project



- Project Features**
- Proposed Gas Pipeline Route
  - Natural Gas Pipeline Laydown Area
  - G Northern Border Pipeline
  - Deer Creek Station Site





**BASIN ELECTRIC  
POWER COOPERATIVE**

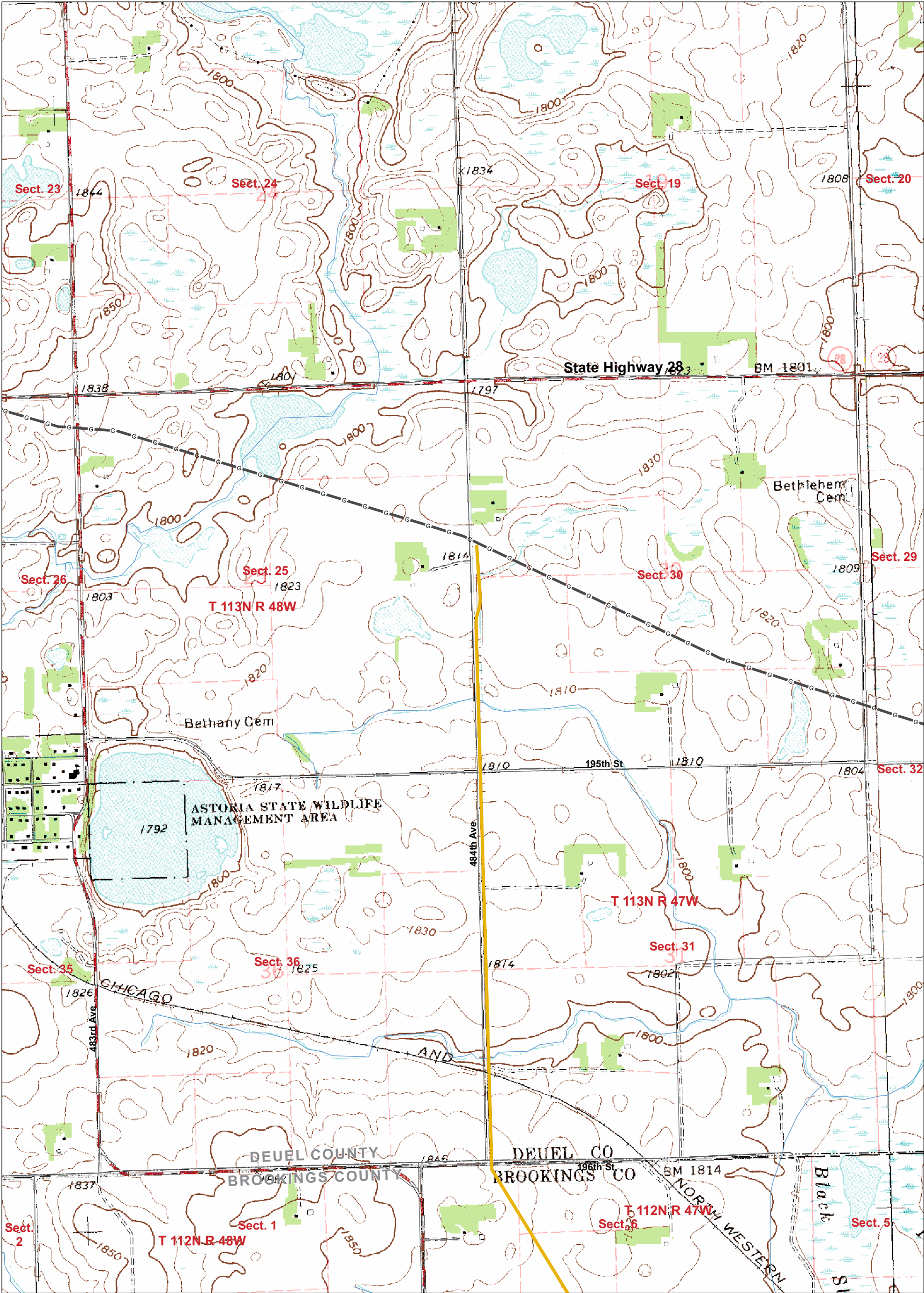
A Touchstone Energy® Cooperative



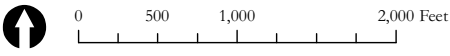
EDAW | AECOM



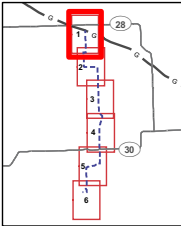




Deer Creek Station Project



- Project Features**
- Proposed Gas Pipeline Route
  - Natural Gas Pipeline Laydown Area
  - G — Northern Border Pipeline
  - Deer Creek Station Site



EDAW | AECOM





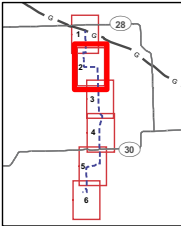




Deer Creek Station Project

Project Features

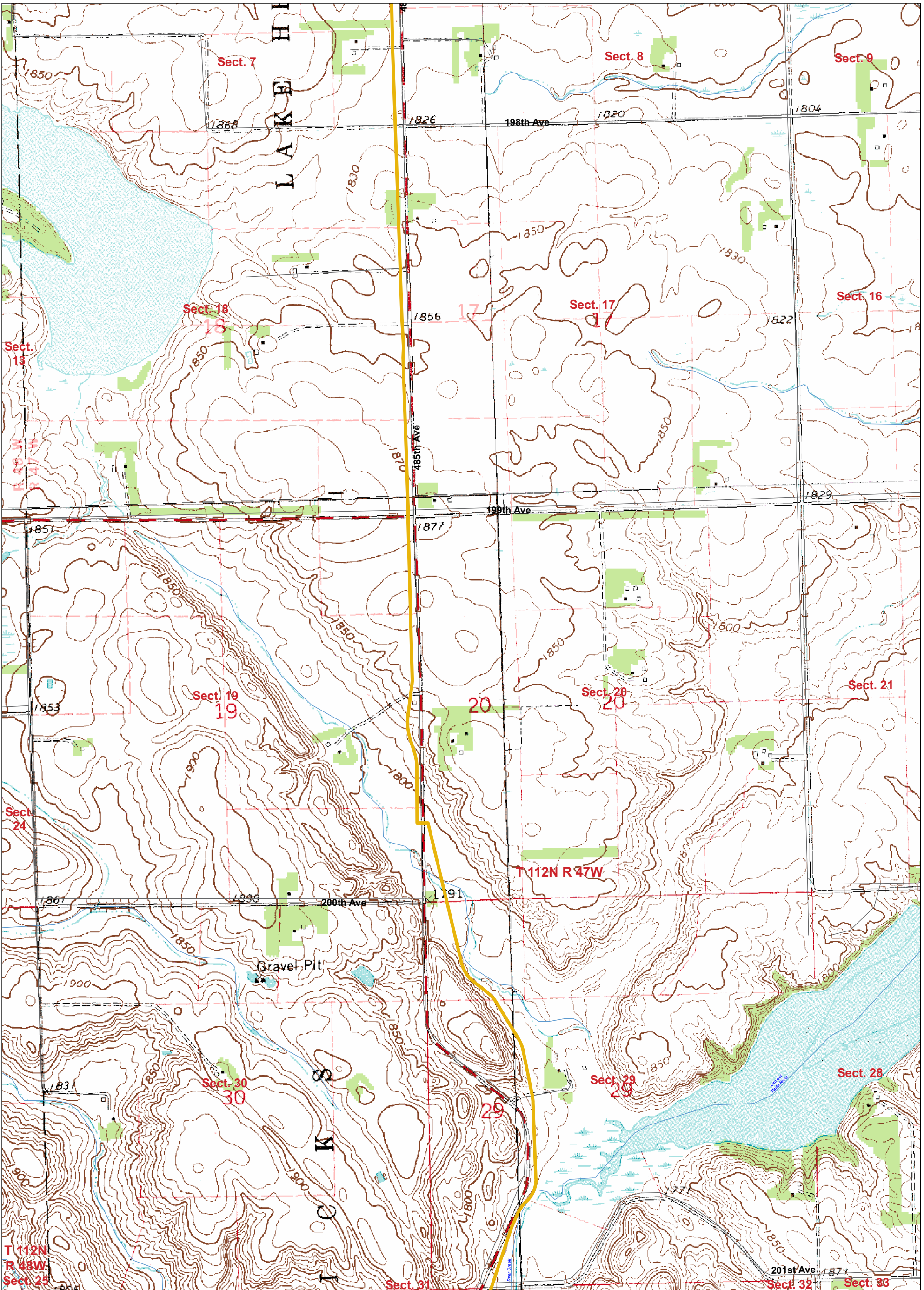
- Proposed Gas Pipeline Route
- Natural Gas Pipeline Laydown Area
- Northern Border Pipeline
- Deer Creek Station Site



EDAW | AECOM



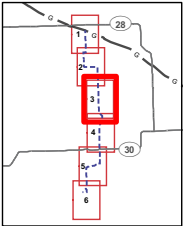




# Deer Creek Station Project

## Project Features

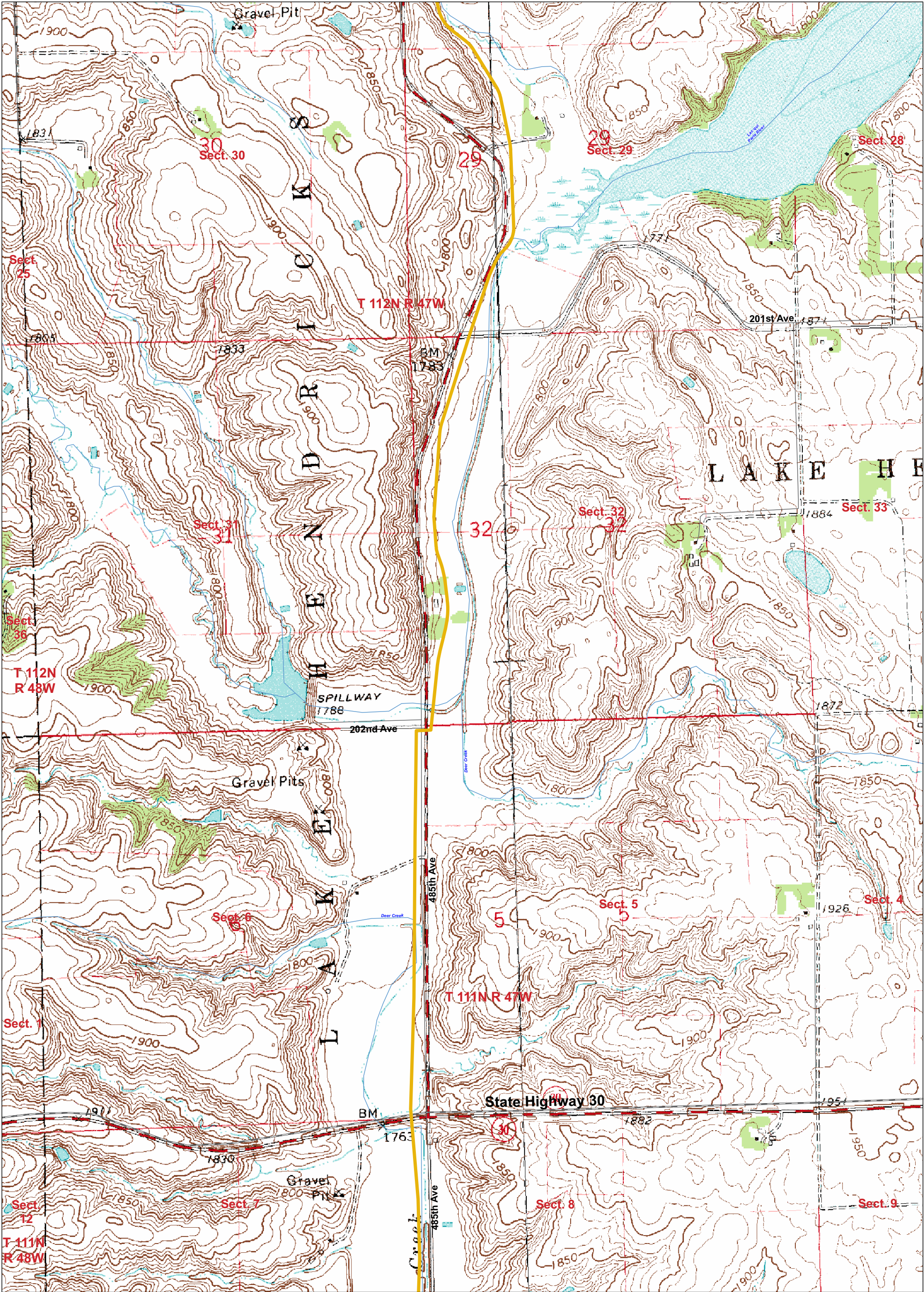
- Proposed Gas Pipeline Route
- Natural Gas Pipeline Laydown Area
- Northern Border Pipeline
- Deer Creek Station Site



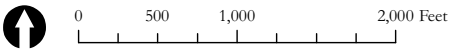
EDAW | AECOM



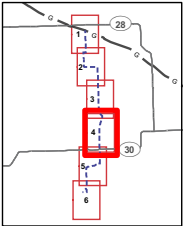




Deer Creek Station Project



- Project Features**
- Proposed Gas Pipeline Route
  - Natural Gas Pipeline Laydown Area
  - Northern Border Pipeline
  - Deer Creek Station Site



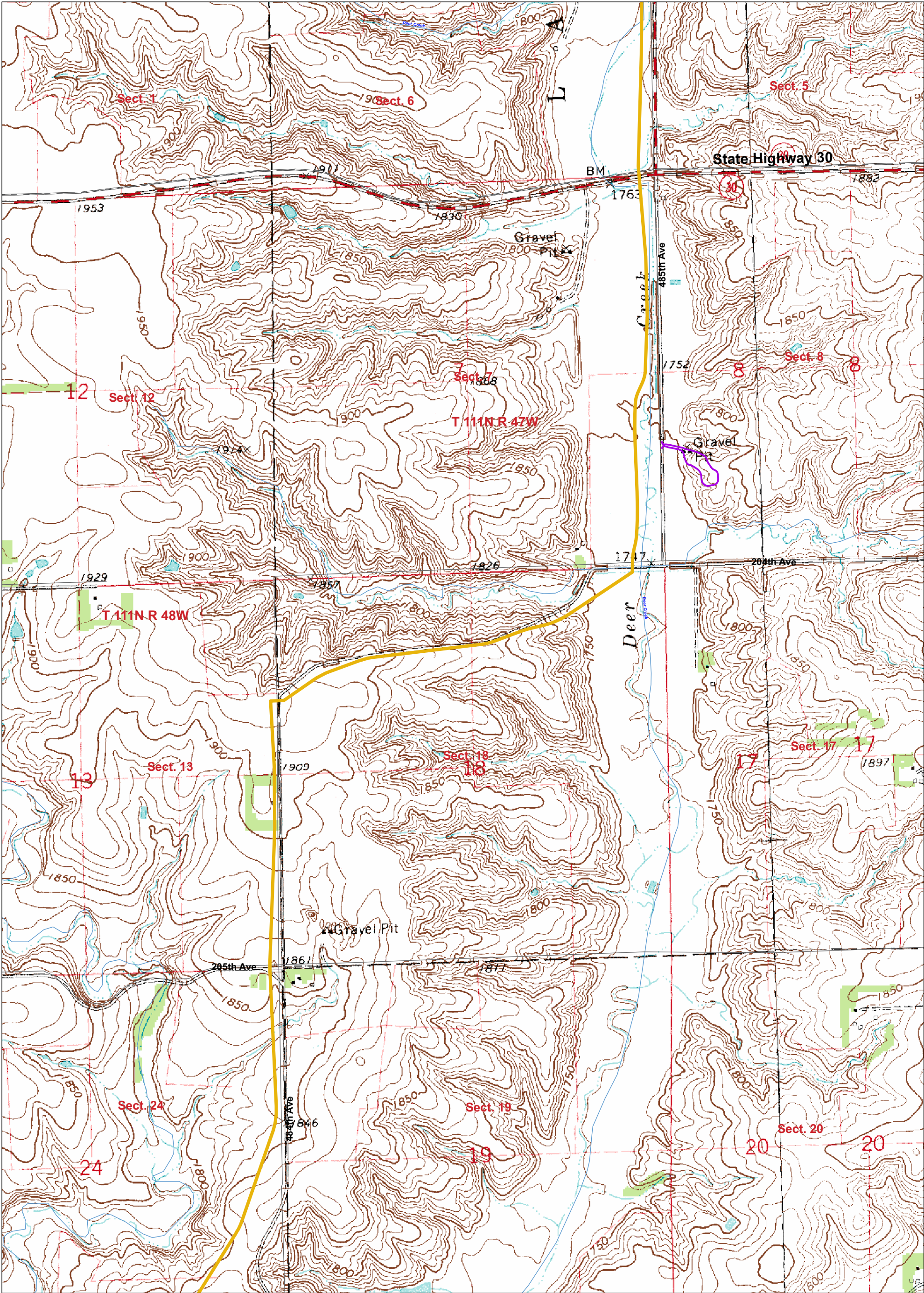
**BASIN ELECTRIC POWER COOPERATIVE**  
A Touchstone Energy® Cooperative

EDAW | AECOM

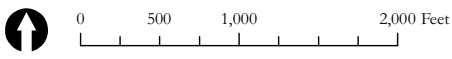




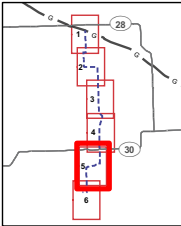




Deer Creek Station Project



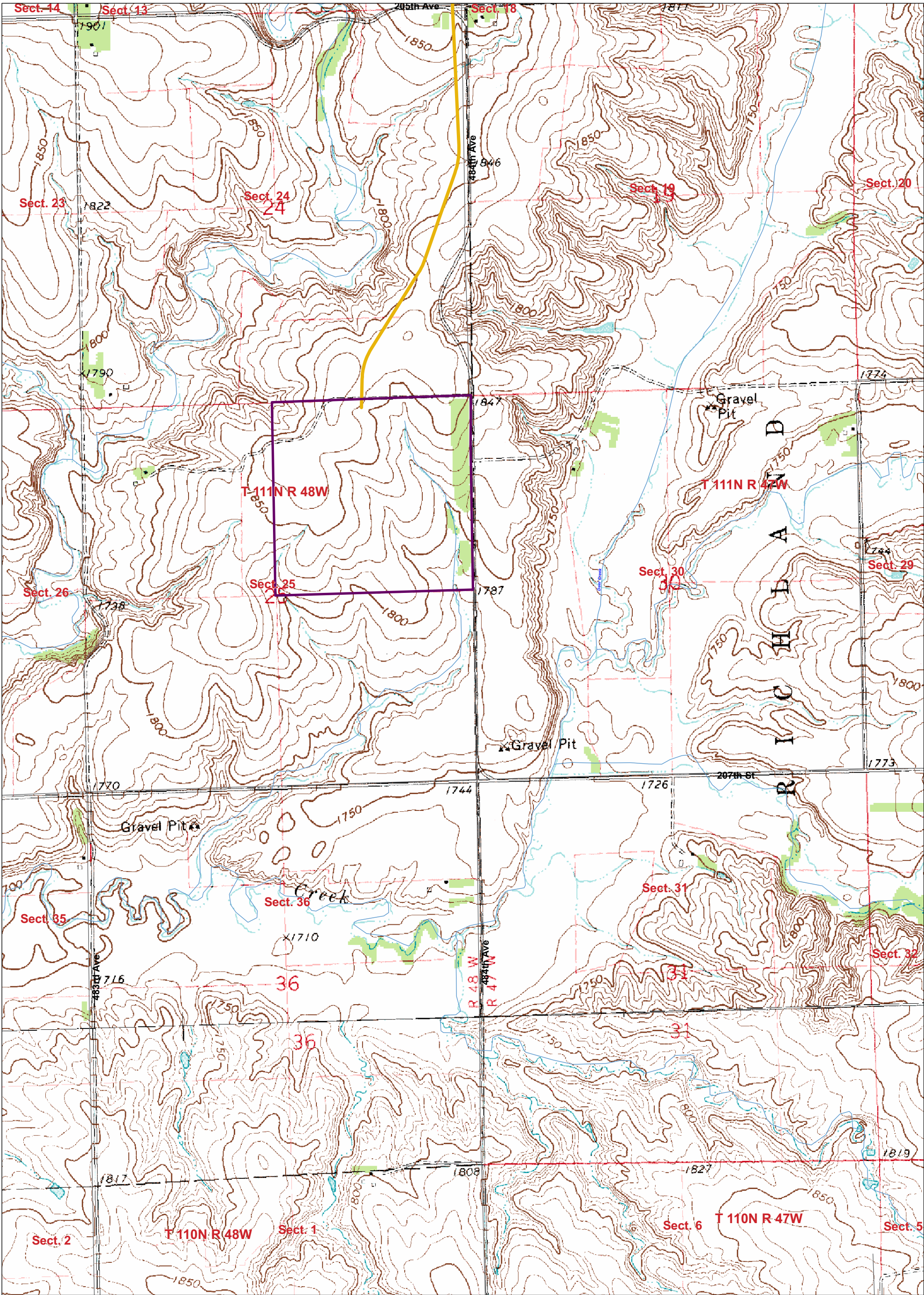
- Project Features**
- Proposed Gas Pipeline Route
  - Natural Gas Pipeline Laydown Area
  - Northern Border Pipeline
  - Deer Creek Station Site



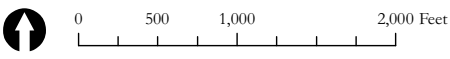
EDAW | AECOM



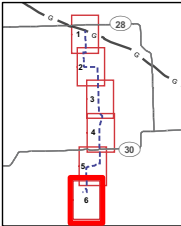




Deer Creek Station Project



- Project Features**
- Proposed Gas Pipeline Route
  - Natural Gas Pipeline Laydown Area
  - Northern Border Pipeline
  - Deer Creek Station Site



EDAW | AECOM